

**BIDDING AND CONTRACT DOCUMENTS  
FOR THE  
METROPOLITAN SEWERAGE DISTRICT OF BUNCOMBE COUNTY  
WEAVERVILLE PUMP STATION AND FORCEMAIN SYSTEM IMPROVEMENTS**

\*\*\*\*\*

**ADDENDUM NO. 1**

**Date Issued: November 27, 2023**

\*\*\*\*\*

Bidders on this Project are hereby notified that this Addendum shall be attached to and made a part of the above-named Bidding and Contract Documents dated October 2023.

The following items are issued to add to, modify, and clarify the Bidding and Contract Documents. These items shall have full force and effect as the Bidding and Contract Documents, and cost involved shall be included in the bid prices. Bids, to be submitted on the specified bid date, shall conform with the additions and revisions listed herein.

Acknowledge receipt of the Addendum by inserting its number and date on the second page of the bid form, i.e., page 004153-3.a. Failure to do so may subject the bidder to disqualification.



11/27/2023

## SECTION 009113 – ADDENDUM #1

### 1.1 PROJECT INFORMATION

- A. Project Name: Weaverville Pump Station and Force Main Improvements.
- B. Owner: Metropolitan Sewerage District of Buncombe County.
- C. Owner Project Number: 2019080.
- D. Engineer: CDM Smith.
- E. Engineer: Project Number: 265366.
- F. Date of Addendum: 11/27/2023

### 1.2 NOTICE TO BIDDERS

- A. This Addendum is issued to all registered plan holders pursuant to the INSTRUCTIONS to Bidders and Conditions of the Contract. This Addendum serves to clarify, revise, and supersede information in the Project Manual, Drawings, and previously issued Addenda. Portions of the Addendum affecting the Contract Documents will be incorporated into the Contract by enumeration of the Addendum in the Owner/Contractor Agreement.
- B. The Bidder shall acknowledge receipt of this Addendum in the appropriate space on the Bid Form.
- C. The date for receipt of bids is unchanged by this Addendum, at same time and location.

### ATTACHMENTS

- D. This Addendum includes the following attached Documents and Specification Sections:
  - 1. Appendix 2 CITI Scope Proposal.
  - 2. Plan Holder's List as of 11-14-23.
  - 3. Responses to questions received during bidding phase.
  - 4. GoToMeeting Link.
- E. This Addendum includes the following attached Sheets:
  - 1. Civil Sheets:
    - a. Reissued:
      - 1) C-105
      - 2) C-307
      - 3) C-308
      - 4) C-310
      - 5) C-317

- 6) CD-9
  - 7) CD-10
- 2. Specification
  - a. Reissued:
    - 1) 004153 - BID FORM
    - 2) 012001 - PRICE AND PAYMENT
    - 3) 012200 - UNIT PRICES

### 1.3 REVISIONS TO DIVISION 00 PROCUREMENT REQUIREMENTS AND CONTRACTING REQUIREMENTS

#### A. SECTION 001113

- 1. On page 001113 - 2, Paragraph 1.4.A
  - a. Change “Prebid Meeting: A Prebid meeting for all bidders will be held at MSD Administration Office, 2028 Riverside Drive, Woodfin, NC on November 29, 2023, at 11:00 a.m., local time. Prospective prime bidders are required to attend.” to read “Prebid Meeting: A Prebid meeting for all bidders will be held at MSD Training Center Conference Room, 2229 Riverside Dr. on November 29, 2023, at 11:00 a.m., local time. Prospective prime bidders are required to attend.”
- 2. On page 001113 – 2, Paragraph 1.4.A
  - a. Add item 1.4.A.3 “General contractors are required to attend in person. All other interested parties have the option to attend in person or virtually. Link to be made available on MSD’s website.”

### 1.4 REVISIONS TO DIVISIONS 02 - 49 SPECIFICATION SECTIONS

#### A. SECTION 264113

- 1. On page 264113-2, Paragraph 2.1.A
  - a. Add item 2.1.A.4 Robbins Lighting, Inc.

#### B. SECTION 263213.13

- 1. On page 263213.13-3, Paragraph 2.1.A
  - a. Add item 2.1.A.4 Blue Star Power Systems, Inc.

#### C. SECTION 331113.19

- 1. Delete specification 331113.19 Casing in its entirety.

#### D. SECTION 331113.39

- 1. Delete specification 331113.39 Fluid Management in its entirety.

### 1.5 REVISIONS TO DRAWING SHEETS

- 1. Drawing I-102 P&ID – Pump Station 1 Electrical and Miscellaneous Equipment Monitoring
  - a. “S08-ZS-11” shall be two switches, one located at each door of the Electrical Building, with field wiring shown from each switch to an input on “S08-PLC.”
- 2. Drawing E-3 General Electrical Notes
  - a. Add note 6 under “DEMOLITION AND DISPOSITION OF EQUIPMENT”

- 1) “All electrical equipment shall be salvaged as indicated per Section 017419.”
3. Drawing E-203 Pump Station 2 Demolition and Modification Plan
  - a. S07-LIT-01 and S07-LIT-02 for Pump Station No. 2 need to be re-located from the exterior wall of the pump station building to the Equipment Mounting Rack and mount the transmitters next to the Pump Control Panel and the Motor Starters.
  - b. Revise NOTE 1 as follows: “1. THE JUNCTION BOX FOR THE LEVEL SENSORS (S07-LSHH-01 AND S07-LSLL-01) SHALL BE MOUNTED ON THE EXTERIOR WALL OF THE EXISTING PUMP STATION BUILDING.”
  - c. Add NOTE 5 as follows: “5. S07-LIT-01 AND S07-LIT-02 SHALL BE MOUNTED ON THE EQUIPMENT MOUNTING RACK. PROVIDE ALUMINUM SUNSHIELD FOR ALL EQUIPMENT ON THE MOUNTING RACK AS INDICATED PER DETAIL A ON SHEET ED-5.””.
4. Drawing ED-1 Electrical Ductbank Schedule
  - a. “Ductbank No.3 from the Electrical Building to the Generator shall be provided with an additional spare 4” conduit for power.”
5. Drawing ED-3 Riser Diagrams
  - a. On the Riser Diagram on Sheet ED-3, provide conduit and wire for the two intrusion alarms (one on the single door and one on the double door of the Electrical Building) for Pump Station No. 1. For each building door intrusion alarm, provide ¾”C., 2#14, 1#14G from the field device to S08-PLC.”

END OF DOCUMENT 009113

# APPENDIX 2

## CITI SCOPE PROPOSAL



## **CITI SCOPE PROPOSAL C23035R1**

**Date:** November 20, 2023

**To:** Bidding Contractors

**Project:** Metropolitan Sewerage District of Buncombe County  
Weaverville Pump Station and Force Main Improvements

**Reference:** Division 40 Process Control System Specification Sections 40 61 00 – 40 78 59

CITI Inc, an equipment supplier, offers to furnish the following described materials and services as our scope as the Process Control System Supplier (PCSS) under Division 40, in accordance with the attached "Conditions of Sale" and other provisions that are referenced herein.

Please note that CITI Inc is a N.C. Dept. of Administration HUB certified Hispanic owned business.

### **CITI Scope Summary**

<u>Materials</u>					
<u>Qty</u>	<u>Description</u>				
1	Pump Station 1 PLC Panel – S08-PLC (NEMA 4X 316SS, 60”H x 60”W x 24”D max.)				
1	Pump Station 1 Pump Control Panel – S08-PCP-01 (NEMA 4X 316SS, 60”H x 60”W x 24”D max.)				
1	Pump Station 2 Pump Control Panel – S07-PCP-01 (NEMA 4X 316SS, 60”H x 60”W x 24”D max.)				
6	Intrinsically Safe Barrier Panel with NEMA 4X wall mount enclosure for the following applications:				
	Location	Service Description	ISB Signals		
	Pump Station 1	Influent Manhole Level	S08-LSHH-03, S08-LSH-03 and S08-LSL-03		
	Pump Station 1	Grinder Channel Level	S08-LSH-11		
	Pump Station 1	Wetwell A Level	S08-LSHH-01 and S08-LSLL-01		
	Pump Station 1	Wetwell B Level	S08-LSHH-02 and S08-LSLL-02		
	Pump Station 1	Vault Flood Alarm	S08-LSHH-04		
	Pump Station 2	Wetwell Level	S07-LSHH-01 and S07-LSLL-01		
1	Magnetic flow meter per specification section 407113 each including flanged end flow tube, grounding rings, remote rack/wall mount transmitter, and interconnect cable for the following applications:				
	Tag No.	Service Description	Flange Size/Type	Cable	
	S8-FE/FIT-01	Pump Station 1 Discharge Flow	16-inch/ASME, CI 150	20-m	
4	Ultrasonic level meter per specification section 407213, each including level sensor with a flange mounting connection, interconnect cable, and a remote wall/rack mount transmitter for the following applications:				
	Tag No.	Service Description	Sensor Mount	Sensor	Cable Length
	S08-LE/LIT-01	Pump Station 1 Wetwell A Level	6-in flange	C1, D2	33 feet
	S08-LE/LIT-02	Pump Station 1 Wetwell B Level	6-in flange	C1, D2	33 feet
	S08-LE/LIT-01	Pump Station 2 Wetwell Level	6-in flange	C1, D2	33 feet
	S08-LE/LIT-02	Pump Station 2 Wetwell Level	6-in flange	C1, D2	33 feet



## Materials

Qty	Description																																				
11	Float type level switches for use with intrinsically safe circuits per specification section 407276, each with 40 ft of integral cable and OEM cable support for the following applications:																																				
	<table><tr><th>Tag No.</th><th>Service Description</th><th>Mounting Hardware</th></tr><tr><td>S08-LSHH-01</td><td>Pump Station 1 Wetwell A – Level High High</td><td><sup>1</sup>Weighted suspension cable and <sup>2</sup>Cable clip</td></tr><tr><td>S08-LSLL-01</td><td>Pump Station 1 Wetwell A – Level Low Low</td><td><sup>1</sup>Weighted suspension cable and <sup>2</sup>Cable clip</td></tr><tr><td>S08-LSHH-02</td><td>Pump Station 1 Wetwell B – Level High High</td><td><sup>1</sup>Weighted suspension cable and <sup>2</sup>Cable clip</td></tr><tr><td>S08-LSLL-02</td><td>Pump Station 1 Wetwell B – Level High High</td><td><sup>1</sup>Weighted suspension cable and <sup>2</sup>Cable clip</td></tr><tr><td>S08-LSHH-03</td><td>Pump Station 1 Influent manhole – Level High High</td><td><sup>1</sup>Weighted suspension cable and <sup>2</sup>Cable clip</td></tr><tr><td>S08-LSH-03</td><td>Pump Station 1 Influent manhole – Level High</td><td><sup>1</sup>Weighted suspension cable and <sup>2</sup>Cable clip</td></tr><tr><td>S08-LSL-03</td><td>Pump Station 1 Influent manhole – Level Low</td><td><sup>1</sup>Weighted suspension cable and <sup>2</sup>Cable clip</td></tr><tr><td>S08-LSH-11</td><td>Pump Station 1 Grinde Channel – Level High</td><td><sup>1</sup>Weighted suspension cable and <sup>2</sup>Cable clip</td></tr><tr><td>S08-LSHH-04</td><td>Pump Station 1 Flow Meter Vault – Flood Alarm</td><td><sup>3</sup>Pole clip</td></tr><tr><td>S07-LSHH-01</td><td>Pump Station 2 Wetwell – Level High High</td><td><sup>1</sup>Weighted suspension cable and <sup>2</sup>Cable clip</td></tr><tr><td>S07-LSLL-01</td><td>Pump Station 2 Wetwell – Level Low Low</td><td><sup>1</sup>Weighted suspension cable and <sup>2</sup>Cable clip</td></tr></table>	Tag No.	Service Description	Mounting Hardware	S08-LSHH-01	Pump Station 1 Wetwell A – Level High High	<sup>1</sup> Weighted suspension cable and <sup>2</sup> Cable clip	S08-LSLL-01	Pump Station 1 Wetwell A – Level Low Low	<sup>1</sup> Weighted suspension cable and <sup>2</sup> Cable clip	S08-LSHH-02	Pump Station 1 Wetwell B – Level High High	<sup>1</sup> Weighted suspension cable and <sup>2</sup> Cable clip	S08-LSLL-02	Pump Station 1 Wetwell B – Level High High	<sup>1</sup> Weighted suspension cable and <sup>2</sup> Cable clip	S08-LSHH-03	Pump Station 1 Influent manhole – Level High High	<sup>1</sup> Weighted suspension cable and <sup>2</sup> Cable clip	S08-LSH-03	Pump Station 1 Influent manhole – Level High	<sup>1</sup> Weighted suspension cable and <sup>2</sup> Cable clip	S08-LSL-03	Pump Station 1 Influent manhole – Level Low	<sup>1</sup> Weighted suspension cable and <sup>2</sup> Cable clip	S08-LSH-11	Pump Station 1 Grinde Channel – Level High	<sup>1</sup> Weighted suspension cable and <sup>2</sup> Cable clip	S08-LSHH-04	Pump Station 1 Flow Meter Vault – Flood Alarm	<sup>3</sup> Pole clip	S07-LSHH-01	Pump Station 2 Wetwell – Level High High	<sup>1</sup> Weighted suspension cable and <sup>2</sup> Cable clip	S07-LSLL-01	Pump Station 2 Wetwell – Level Low Low	<sup>1</sup> Weighted suspension cable and <sup>2</sup> Cable clip
	Tag No.	Service Description	Mounting Hardware																																		
	S08-LSHH-01	Pump Station 1 Wetwell A – Level High High	<sup>1</sup> Weighted suspension cable and <sup>2</sup> Cable clip																																		
	S08-LSLL-01	Pump Station 1 Wetwell A – Level Low Low	<sup>1</sup> Weighted suspension cable and <sup>2</sup> Cable clip																																		
	S08-LSHH-02	Pump Station 1 Wetwell B – Level High High	<sup>1</sup> Weighted suspension cable and <sup>2</sup> Cable clip																																		
	S08-LSLL-02	Pump Station 1 Wetwell B – Level High High	<sup>1</sup> Weighted suspension cable and <sup>2</sup> Cable clip																																		
	S08-LSHH-03	Pump Station 1 Influent manhole – Level High High	<sup>1</sup> Weighted suspension cable and <sup>2</sup> Cable clip																																		
	S08-LSH-03	Pump Station 1 Influent manhole – Level High	<sup>1</sup> Weighted suspension cable and <sup>2</sup> Cable clip																																		
	S08-LSL-03	Pump Station 1 Influent manhole – Level Low	<sup>1</sup> Weighted suspension cable and <sup>2</sup> Cable clip																																		
	S08-LSH-11	Pump Station 1 Grinde Channel – Level High	<sup>1</sup> Weighted suspension cable and <sup>2</sup> Cable clip																																		
	S08-LSHH-04	Pump Station 1 Flow Meter Vault – Flood Alarm	<sup>3</sup> Pole clip																																		
	S07-LSHH-01	Pump Station 2 Wetwell – Level High High	<sup>1</sup> Weighted suspension cable and <sup>2</sup> Cable clip																																		
S07-LSLL-01	Pump Station 2 Wetwell – Level Low Low	<sup>1</sup> Weighted suspension cable and <sup>2</sup> Cable clip																																			
<sup>1</sup> A weighted cable assembly is proposed where it is not readily possible to enter the tank or wetwell to adjust a float's setpoint. The assembly will include wall mountable suspension bracket, 1/8-inch by x ft long 316SS suspension wire, and bottom suspended mushroom anchor weight.																																					
<sup>2</sup> Cable clip will be used to tether the float cable to the suspension cable at the setpoint.																																					
<sup>3</sup> Pole clip will be used to tether the float cable to a nominal 1-inch support pipe. Support pipe and wall mountable brackets per Drawing ID-1 Detail are not included in this scope																																					
6	Pressure gauge and switch assembly per specification sections 407313 and 407336, each including a pressure gauge, pressure switch, a 1-inch threaded isolation annular seal and 1-inch inlet isolation and bleed-off ball valves for the following applications:																																				
	<table><tr><th>Tag</th><th>Service Description</th></tr><tr><td>S08-PI/PSH-01</td><td>Pump Station 1 Wetwell A Pump 1 Discharge Pressure</td></tr><tr><td>S08-PI/PSH-02</td><td>Pump Station 1 Wetwell A Pump 2 Discharge Pressure</td></tr><tr><td>S08-PI/PSH-03</td><td>Pump Station 1 Wetwell B Pump 3 Discharge Pressure</td></tr><tr><td>S08-PI/PSH-05</td><td>Pump Station 1 Surge Line Pressure</td></tr><tr><td>S07-PI/PSH-01</td><td>Pump Station 2 Wetwell Pump 1 Discharge Pressure</td></tr><tr><td>S07-PI/PSH-02</td><td>Pump Station 2 Wetwell Pump 2 Discharge Pressure</td></tr></table>	Tag	Service Description	S08-PI/PSH-01	Pump Station 1 Wetwell A Pump 1 Discharge Pressure	S08-PI/PSH-02	Pump Station 1 Wetwell A Pump 2 Discharge Pressure	S08-PI/PSH-03	Pump Station 1 Wetwell B Pump 3 Discharge Pressure	S08-PI/PSH-05	Pump Station 1 Surge Line Pressure	S07-PI/PSH-01	Pump Station 2 Wetwell Pump 1 Discharge Pressure	S07-PI/PSH-02	Pump Station 2 Wetwell Pump 2 Discharge Pressure																						
	Tag	Service Description																																			
	S08-PI/PSH-01	Pump Station 1 Wetwell A Pump 1 Discharge Pressure																																			
	S08-PI/PSH-02	Pump Station 1 Wetwell A Pump 2 Discharge Pressure																																			
	S08-PI/PSH-03	Pump Station 1 Wetwell B Pump 3 Discharge Pressure																																			
	S08-PI/PSH-05	Pump Station 1 Surge Line Pressure																																			
	S07-PI/PSH-01	Pump Station 2 Wetwell Pump 1 Discharge Pressure																																			
S07-PI/PSH-02	Pump Station 2 Wetwell Pump 2 Discharge Pressure																																				
1	Pressure gauge assembly per specification sections 407326, each including pressure gauge level transmitter, a 1-inch threaded isolation annular seal and 1-inch inlet isolation and bleed-off ball valves for the following applications:																																				
	<table><tr><th>Tag</th><th>Service Description</th></tr><tr><td>S08-PIT-01</td><td>Pump Station 1 Discharge Pressure</td></tr></table>	Tag	Service Description	S08-PIT-01	Pump Station 1 Discharge Pressure																																
	Tag	Service Description																																			
S08-PIT-01	Pump Station 1 Discharge Pressure																																				
1	Ethernet CAT6 cabling per specification section 406613 – 2.3 for the following runs: <ul style="list-style-type: none"><li>• Pump Station 1 S08-PLC Panel to S08-VFD-01 Panel</li><li>• Pump Station 1 S08-PLC Panel to S08-VFD-02 Panel</li><li>• Pump Station 1 S08-PLC Panel to S08-VFD-03 Panel</li></ul>																																				



### **Materials**

<b><u>Qty</u></b>	<b><u>Description</u></b>				
2	Intrusion alarm switch per specification section 407819 – 2.2, each including junction box with field terminal blocks for the following applications: <table border="1" style="margin-left: 20px;"> <tr> <th>Tag</th><th>Service Description</th></tr> <tr> <td>S08-ZS-11</td><td>Pump Station 1 Building Intrusion Alarm</td></tr> </table>	Tag	Service Description	S08-ZS-11	Pump Station 1 Building Intrusion Alarm
Tag	Service Description				
S08-ZS-11	Pump Station 1 Building Intrusion Alarm				
1	PLC maintenance materials per specification section 406343 – 1.6.A				
1	Switches and routers maintenance materials per specification section 406613 – 1.6.A				
1	Cellular network equipment maintenance materials per specification section 406643 – 1.6.A				
1	Antennas maintenance materials per specification section 406663 – 1.6.A				
1	Magnetic flow meter maintenance materials per specification section 407113 – 1.5.A				
1	Ultrasonic level meter maintenance materials per specification section 407213 – 1.6.A				
1	Level switches maintenance materials per specification section 407276 – 1.6.A				
1	Gauge pressure transmitters maintenance materials per specification section 407326 – 1.5.A				
1	Pressure and differential pressure switches maintenance materials per specification section 407336 – 1.5.A				
1	Relays maintenance materials per specification section 407853 – 1.5.A				
1	Power supplies maintenance materials per specification section 407859 – 1.5.A				
1	Lot of stainless-steel nameplates for instruments in this scope				
1	Lot of field instrument surge protection for instruments in this scope				
1	O&M Manuals per specification section 406100-1.7 for equipment in this scope				

### **Services**

<b><u>Qty</u></b>	<b><u>Description</u></b>
1	Preinstallation meetings attendance per specification section 406100-1.4 and 406863 – 1.3
1	Instrumentation and control submittals per specification section 406100 – 1.5 <ul style="list-style-type: none"> <li>• Project plan</li> <li>• Input/output list</li> <li>• Control system architecture</li> <li>• Field instrumentation</li> <li>• Control panel drawings and panel equipment</li> </ul>
1	Testing submittal per specification section 406121.20 – 1.4
1	Process control system testing per specification section 406121.20 – 3.1.C <ul style="list-style-type: none"> <li>• Witnessed Factory Test (WFT)</li> <li>• Operational Readiness Test (ORT)</li> <li>• Functional Demonstration Test (FDT)</li> <li>• Site Acceptance Test (SAT)</li> </ul>
1	Training submittals per specification section 406126 – 1.3
1	Instrumentation and Control training sessions per specification sections 406126-3.2 and 406863 – 3.9
1	Software submittals per specification sections 406863 and 406866 <ul style="list-style-type: none"> <li>• System Standards and Conventions</li> <li>• Operator Interface</li> <li>• Controller Program</li> <li>• Reports</li> <li>• Historical Data Management</li> </ul>





<b>Services</b>	
<b>Qty</b>	<b>Description</b>
1	HMI application, historian, and reports development per specification sections 406863 process control descriptions in specification section 406196
1	PLC application development per specification section 406866 and process control descriptions in specification section 406196
1	Ethernet network cabling terminations and testing for all cabling in this scope

### **CITI Pricing Summary**

<i>Pricing for CITI scope of materials and services</i>	<i>Materials Subtotal =</i>	<i>\$249,220</i>
	<i>Services Subtotal =</i>	<i>\$212,520</i>
	<i>Total =</i>	<i>\$461,740</i>

**TAXES ARE EXCLUDED**

### **CITI Clarifications:**

1. The scope of this proposal excludes all of the following regardless of the specification responsibility statements:
  - Instruments listed in the specification section 407000 instrumentation schedule as being provided under specification sections outside of 406100, and instruments shown on P&ID as being provided as part of a vendor package. Please refer to P&ID 1-100, I-101, I-102 and I-201 for anticipated vendor package scopes;
  - Field instruments not listed in Section 407000 instrumentation schedule unless they are specifically listed in CITI Inc's materials scope;
  - Equipment mounting racks and stands, sensor support brackets, instrument and panel sunshades, support anchors and hardware, flange fitting accessory kits, pipe taps, isolation valves, sample pumps, sample piping, impulse piping, grounding wire and rods, stilling wells, etc. as may be required or shown on the contract drawings, unless specifically listed in CITI Inc's materials scope;
  - Local control panels, local control stations, E-Stop stations, H/O/A stations, PLC enclosures, and VFD panels not listed in the Industrial Enclosure Schedule in specification section 406717 – 3.4;
  - Field instrument and panel sunshades for outdoor mounted applications;
  - Float support pipes and their wall brackets as shown on contract drawing ID-1;
  - Float/Level termination panel as shown on contract drawing ID-1;
  - Temporary bypass pumping systems;
  - Demonstration and training video recordings;
  - Power system studies including power distribution system study;
  - Configuration of the Verizon Wireless Private Network (VWPN). We will coordinate with MSD to add the cellular modems from the pump stations system to their existing VWPN;
  - Modifications to existing odor control system S8-LCP-01;
  - Modifications to existing Pump Station 2 PLC Panel S07-PLC. Current IO capacity is sufficient for the interconnected equipment shown on the contract drawings;
  - Planning and scheduling of pre-installation meetings;
  - Field wiring materials, power disconnect switches, conduits, junction boxes, and pull boxes;
  - Surge protection for field components and instruments supplied by others;
  - Nametags for field components and instruments supplied by others;
  - PLC program development software licenses;
  - SCADA software licenses including communication drivers;
  - Building or work permits;
  - Demolition or relocation of existing instrumentation and controls equipment;
  - Onsite supervision of equipment installation;

*“Our Innovation Sets Standards”*



- Installation of panels and field process components/instruments, field wiring and network cabling;
  - Field wiring terminations of power and control wiring at panels, field instruments, and process components;
  - Field fiber optic and copper cable;
  - Field terminations and testing of fiber and copper communications network cabling, unless specifically listed in CITI Inc's materials scope;
  - PLC programming and OIT programming of panels supplied by others;
  - Component inspections and startup for field process components/instruments and panels supplied by others;
  - Materials not specifically listed in CITI Inc's scope;
  - Services not specifically listed in CITI Inc's scope.
2. Network equipment will be configured in accordance with the current telemetry system, no additional network appliances will be provided under this scope of work, but may be added at additional cost if required by the Owner.
  3. All instruments and panels furnished under the scope of this proposal will be provided with the manufacturers' standard finish.
  4. Materials will be released for manufacture and shipment to the job site upon receipt of the approved submittal and your authorization. After your authorization to release, you must accept deliveries when equipment is available. You must assume custody upon delivery and provide suitable facilities in accordance with the specifications for on-site storage until materials are installed and powered. CITI Inc's hardware submittals will be available within 12 weeks after receipt of an executed order. Materials should be fully deliverable in accordance with an agreed upon schedule within 20-24 weeks after approval of the submittal; however, delivery schedules are non-binding, and CITI Inc maintains the right to partial delivery of as materials become available. If the delivery of materials is delayed as a result of manufacturer supply chain issues or other factors beyond our control, CITI Inc shall not be liable for any additional costs or damages associated with such delays.
  5. After your completion of equipment installation and field wiring terminations, CITI Inc will begin the field services for commissioning our panels and field instruments. You will need to have qualified staff present during this testing to assist in verifying that each external connection to the equipment is correctly wired and to operate the interconnected field process equipment and panels furnished by others.
  6. All materials are warranted for 18 months after delivery, 12 months after completion of their respective acceptance testing, or 12 months after the original project completion date, whichever occurs first. We will be responsible for shipping and repair costs for non-conforming or defective items during the warranty period. You will be responsible for removal, return shipment, receipt, and re-installation of any equipment items which you originally installed.
  7. CITI Inc's insurance coverage is: general liability - \$1,000,000/\$2,000,000; auto liability - \$1,000,000; excess liability - \$1,000,000; and workers compensation - \$1,000,000. If any additional coverage or endorsements are required, the charges for additions to CITI Inc's policy will be charged to you as an extra expense at actual cost times a multiplier of 1.15.
  8. CITI Inc will retain all rights to Intellectual Property developed under this project and will grant the end user non-transferable rights to its use and modification. A copy of CITI Inc's privacy statement is available at [www.CITI-INC.com](http://www.CITI-INC.com).
  9. This proposal is based on costs available to us on date of this proposal and is valid for 60 days. Due to supply chain cost volatility, CITI Inc reserves the right to escalate selling price prior to receipt of authorization for release for manufacture and delivery. Shipping is FOB factory, freight cost allowed. Unless stated elsewhere in this proposal, destination of all shipments will be the designated project site. Payment terms for this project are net 30 days, contingent upon approved credit, after the date of each invoice. Payment to CITI Inc shall not be dependent on you being paid by any third parties. Materials that are delivered or approved for storage in CITI Inc's facility will be billed complete at time of delivery/storage in accordance with a pre-submitted schedule of values. Services will be billed on a percentage completed against this schedule of values.



10. CITI Inc will accept retainage being withheld from progress payments due to CITI if the Owner is applying retainage against the prime contract. Five percent retainage may be withheld until CITI Inc's work is 50% complete by approved billings, after which 0% may be withheld. Partial and full retainage releases must be made within the earlier of: seven days of Owner's payment of retainage to you; or 60 days from the completion of CITI Inc's scope of work.
11. CITI Inc will not provide any materials or services for this project prior receipt of an executed purchase order.
12. CITI Inc will accept a purchase order for this scope of supply subject to these clarifications and the attached CITI Inc "Conditions of Sale". A subcontract will not be accepted. The order will need to incorporate this proposal or specifically include within its body the listing of materials, services, and clarifications from this proposal so as to define CITI Inc's scope of supply and terms. Flow down clauses will not be accepted. All terms of CITI Inc's agreement must be specifically listed in the order. Assignment of order is subject to CITI Inc's written consent.
13. CITI Inc will apply taxes to all invoices for labor and materials as applicable. If a tax exemption is being claimed, all relevant exemption forms must be provided to CITI at the time the purchase order is issued. A completed NCDOR E-589CI Affidavit of Capital Improvement is needed if the work is to be taxed as a real property contract with respect a capital improvement to real property.

If you have any questions about this scope of supply, please call us. Thank you for your consideration.

**CITI Inc.**

A handwritten signature in black ink, appearing to read "Camilo Castaño", with a horizontal line extending to the right.

Camilo Castaño  
Project Manager

Attachment: CITI Inc Conditions of Sale

# CITI, INC CONDITIONS OF SALE

1. **GENERAL:** Sales by CITI, INC, (herein CITI) are made solely under the conditions expressly set forth herein. Any proposed changes or exceptions to these conditions, or additional terms and conditions, included or referenced in Purchaser's order or acceptance of this offer, are hereby rejected by CITI, and shall be of no force or effect upon CITI unless expressly accepted in writing by CITI.

This Contract shall bind and inure to the benefit of Purchaser and CITI, as well as their respective successors and assigns; however, neither party may assign this Contract without prior written consent of the other.

Neither party shall be deemed to have waived its rights by failing to enforce any particular provision of this Contract.

If a court invalidates any portion of this Contract, the rest of this Contract shall remain valid and be construed as if not containing the invalidated provision.

North Carolina law shall govern the rights and obligations of the parties. Either party may pursue any legal means available to resolve disputes or claims arising out of or relating to this Contract. Both parties agree to the jurisdiction for resolution of disputes under this order as Mecklenburg County, North Carolina. Each party shall be responsible for their own legal fees in any matter related to this agreement.

2. **CREDIT APPROVAL:** If at any time information available on Purchaser's financial condition or credit history, in CITI's judgment, does not justify the terms of payment specified herein, CITI may require full or partial payment in advance, or an acceptable form of payment guarantee such as a bank letter of credit, or other modifications to the terms of payment.

3. **PROPRIETARY INFORMATION:** All information, data, drawings, instruction and operation manuals furnished by CITI with this Contract are proprietary to CITI, submitted in strict confidence, and are to be used by Purchaser solely for the purposes of this Contract, and shall not be reproduced, transmitted, disclosed or used in any other manner without CITI's written authorization.

4. **RISK OF LOSS:** Risk of loss or damage to the Products, or any part thereof, shall pass to Purchaser at the f.o.b. ship point stated herein.

5. **EXCUSABLE DELAY:** CITI shall not be liable for failure to perform or for delay in performance due to fire, flood, or any other act of God; strike or other labor difficulty, including the bankruptcy of any suppliers to CITI, act of any civil or military authority or of Purchaser; riot; embargo; delay in or shortage of transportation facilities; or any other delay beyond CITI's reasonable control. In the event CITI's performance is delayed by any such cause, CITI's schedule for performance shall be extended accordingly. If Purchaser's actions delay CITI's performance, Purchaser shall pay CITI any additional costs incurred by CITI resulting from such delay. If Purchaser delays shipment of Products, or any part thereof, in addition to paying CITI for additional costs incurred, Purchaser shall also pay for the Products or the parts on the date CITI is prepared to make shipment.

6. **TAXES AND LICENSES:** The Purchase Price does not include any licenses or State or local taxes of any kind applicable to the sale, use or delivery of the Products or services covered under this Contract. Purchaser shall pay direct or reimburse CITI for any such license fees or taxes that CITI or CITI's subcontractors or suppliers are required to pay. CITI will apply taxes to all invoices for labor and materials as applicable to the State where the work is sold. If a tax exemption is being claimed, all relevant exemption forms must be provided to CITI at the time of execution of this Contract.

7. **INSPECTION BY PURCHASER:** Purchaser may inspect the Products at Purchaser's expense at the point of manufacture, provided that such inspection is arranged and conducted so as not to unreasonably interfere with CITI's or the manufacturer's operations. Purchaser's inspection of the Products and release for shipment shall constitute Purchaser's acceptance of the Products as conforming to the requirements of this Contract.

8. **WARRANTY:** CITI warrants the Products from defects in material and workmanship for a period of one (1) year from date the Products are initially placed in operation, or eighteen (18) months from date the Products are shipped, whichever occurs first, provided that the Products are stored, installed, maintained and operated in accordance to the manufacturers recommendations and are protected from harm or damage including but not limited to fire, water, physical damage, exposure to inclement weather, extreme temperatures, and not subjected to misuse, neglect or accident. Upon prompt written notice of and determination that such defect is covered under the foregoing warranty, CITI's responsibility is limited to correction of the defect by, at CITI's option,

repair or replacement of the defective part or parts, f.o.b. factory. CITI will not accept responsibility for incidental or consequential damages. Unless stated elsewhere herein, CITI provides no warranty of product performance or process results. The foregoing warranties are exclusive and in lieu of all other warranties of any kind, including any implied warranty of merchantability or fitness for a particular purpose.

Any products repaired or replaced under this warranty will be warranted for the remainder of the original warranty period. CITI shall have no responsibility for the condition of primed or finish painted surfaces after the Products leave their point of manufacture.

Field touch-up of shop primed or painted surfaces is normal and shall be at Purchaser's expense. Any touch-up or repainting required to shop primed or painted surfaces, for reasons other than improper or incorrect application in the shop, shall be Purchaser's responsibility.

Purchaser shall be responsible for unpacking and inspecting all shipped Products and noting any damage on the shipper's bill of lading. Any damage must be reported to CITI within 48 hours of receipt of shipment by Purchaser.

9. **PAYMENT TERMS.** CITI's payment terms are Net 30 days from date of CITI invoice. If Purchaser is late in paying the Purchase Price or any partial payment due under this Contract, or otherwise breaches this Contract, CITI shall be entitled to interest at 1½% per month on the overdue amount, and on its damages, calculated from the date of default in payment or other breach, plus court costs, reasonable attorneys' fees and other expenses incurred in any effort to collect.

No retainage on the equipment, products, services, or any part thereof, is allowed unless prior approved by CITI. Full retainage release must be made within the earlier of: seven days after purchaser receives payment of retainage, 60 days from the completion of CITI's scope of work, or 180 days after delivery, whichever occurs first.

10. **BACKCHARGES:** CITI shall not be liable for any charges incurred by Purchaser for work, repairs, replacements or alterations to the Products, without CITI's prior written authorization, and any adverse consequences resulting from such unauthorized work shall be Purchaser's full responsibility.

11. **LIMITATION OF LIABILITY:** CITI shall not be liable to purchaser for any special, indirect, incidental or consequential damages arising from CITI's obligations under this contract, whether such damages are based upon breach of contract, breach of warranty, tort, strict liability or otherwise. In any event, CITI's liability to purchaser shall not exceed the purchase price of the products or parts of the products on which such liability is based.

12. **CANCELLATION BY PURCHASER:** If Purchaser cancels this Contract or refuses to accept delivery of the Products, Purchaser shall be liable to CITI for reasonable cancellation charges, including loss of anticipated profits, administrative costs, commissions to sales representatives, costs incurred by CITI for all work performed or in process up to the time of cancellation or refusal to accept delivery, cancellation charges from CITI's suppliers or subcontractors, and any other expenses incurred by CITI in connection with Purchaser's cancellation or refusal to accept delivery.

13. **DEFAULT BY PURCHASER:** Without incurring any liability or waiving any claim for damages CITI may have against Purchaser, CITI may refuse to make or delay making delivery, and/or withhold any service, and/or ship C.O.D., and/or apply payments to open balances at CITI discretion, if:

(a) Purchaser breaches this or any contract with CITI, or; (b) CITI fails to receive payment within 30 days from date of invoice, or; (c) CITI becomes aware of facts which, in its judgment, render Purchaser's financial condition unsatisfactory or cast doubt on Purchaser's willingness or ability to pay for the Products and/or services, or; (d) Purchaser engages in or consents to liquidation, commission of any act of insolvency, appointment of a receiver of assets or assignment for the benefit of creditors, or if Purchaser becomes the subject of any bankruptcy or insolvency proceeding.

**METROPOLITAN SEWERAGE DISTRICT OF BUNCOMBE COUNTY**

**Weaverville Pump Station and Force Main Improvements, Project No. 2019080  
Bid Opening December 14, 2023 @ 2:00 PM**

**Planholder's List**

T.P. Howard's Plumbing Company 90 Number Nine Road Fairview, NC 28730 Contact: Danny Dash <a href="mailto:dannyd@tphowardsplumbing.com">dannyd@tphowardsplumbing.com</a> 828-628-1369	Morgan Contracting 900 Dutch Valley Drive Knoxville, TN 37918 Contact: Vincent Bayles <a href="mailto:estimating@morganl.com">estimating@morganl.com</a> 865-249-8640 x 410
Haren Construction Company, Inc. 1715 Highway 411 N. Etowah, TN 37331 Contact: Cindy Osborne <a href="mailto:cosborne@harenconstruction.com">cosborne@harenconstruction.com</a> 423-263-5561	

DATE: November 27, 2023

RESPONSES TO QUESTIONS RECEIVED DURING BIDDING PHASE:

1. QUESTION: Is there a potential for consideration to add KSB to this list (pump manufacturer)?  
RESPONSE: The design intent is for one of the listed pump manufacturers to be used for this project. It is acceptable for the general contractor to provide a substitution submittal per Section 012500 and 016100.
2. QUESTION: Can you provide a Plan Holders list for this project?  
RESPONSE: Plan holders as of 11/14/2023 are included in the attachments.
3. QUESTION: Is there a start date for the project to begin? Is there an end date as well?  
RESPONSE: We anticipate having a 6-month administration period for the project starting in January or February 2024 with actual construction starting some time next summer. End date is 21 months later.
4. QUESTION: Do we need to be prequalified to bid on this project, or just turn a qualification statement in with our bid?  
RESPONSE: Prequalification is not a requirement. Requirements for bidding are shown on MSD's website.
5. QUESTION: Where can we get the bidding documents?  
RESPONSE: MSD's website.
6. QUESTION: Will be a virtual option for the Prebid meeting on 11/29/2023?  
RESPONSE: General contractors are required to attend in person as pre-bid meeting will include visit to Pump Station #1. Non-general contractors may attend virtually.  
GoToMeeting link: <https://meet.goto.com/371236885>  
GoToMeeting Link will also be available on MSD's website.
7. QUESTION: Can the bid date be moved to the week of the 18<sup>th</sup> of December?  
RESPONSE: MSD would prefer not to change the bid due date but is willing to discuss further in the pre-bid meeting.
8. QUESTION: Can Generac Power Systems be added to the list of approved generator manufacturers?  
RESPONSE: Generac is not an approved generator manufacturer.
9. QUESTION: Consider replacing detail D on MD-2 with HARCO Air Relief Valve Riser Assembly.

RESPONSE: For combination air valves, no substitutions are allowed. For vacuum breaker/air release valves, approved equals will be considered if the product meets the specifications.

10. QUESTION: Is CJGeo an approved grout manufacturer?

RESPONSE: If CJ Geo can meet project specifications, then they will be considered an approved equal.

11. QUESTION: Please confirm whether the jack and bore casing needs to be 42" or 36".

Item No. 12 on the bid form currently states "42-inch Casing" and drawing C-302 shows a 36" casing.

RESPONSE: 36" minimum casing size.

12. QUESTION: Please clarify what the "Hydro Building" is referring to in Bid Form item 21.

This Building is not mentioned anywhere else in the specs or drawings.

RESPONSE: The hydro building is at the southern end of the project coming off Riverside Drive. See plan sheet C-317.

13. QUESTION: Please confirm where both Section 331113.19 "Casing" and section 331113.39 "Fluid Management" apply to in the drawings. Both specs look to be accidentally included and are not needed.

RESPONSE: These specification sections can be removed.

14. QUESTION: Please confirm if this project will be subject to Davis Bacon wages. Article 14 in the Instruction to Bidders section of the specs states that the project is not subject to Davis Bacon requirements. Section "Federal Government Provisions" of the Supplementary Conditions states that Davis Bacon Act does apply.

RESPONSE: No. Davis Bacon does not apply.

15. QUESTION: Please confirm if this project will be subject to the American Iron and Steel Requirements. Article 15 in the Instruction to Bidders section of the specs states that the project is not subject to AIS requirements. Section "Federal Government Provisions" of the Supplementary Conditions states that AIS does apply.

RESPONSE: No, AIS is not required.

16. QUESTION: Would an extension to the current bid date of 12/14 be considered in order to compensate for the time between bid advertisement and award occurring during a holiday?

RESPONSE: This will be considered and can be discussed in the pre-bid meeting.

17. QUESTION: Please clarify whether the contractor or owner is responsible for coordinating with Duke Energy in order to perform the work referred to in item A "Construct Pump Station #1" within the Sequence of Construction in the project specs.

RESPONSE: The contractor is responsible.

---

## **MSD Pre-Bid Mtg - Wvrl PS and Forcemain Improvements**

Nov 29, 2023, 11:00 AM – 1:00 PM (America/New\_York)

**Please join my meeting from your computer, tablet or smartphone.**

<https://meet.goto.com/371236885>

**You can also dial in using your phone.**

Access Code: 371-236-885

United States (Toll Free): [1 866 899 4679](tel:18668994679)

United States: [+1 \(571\) 317-3116](tel:+15713173116)

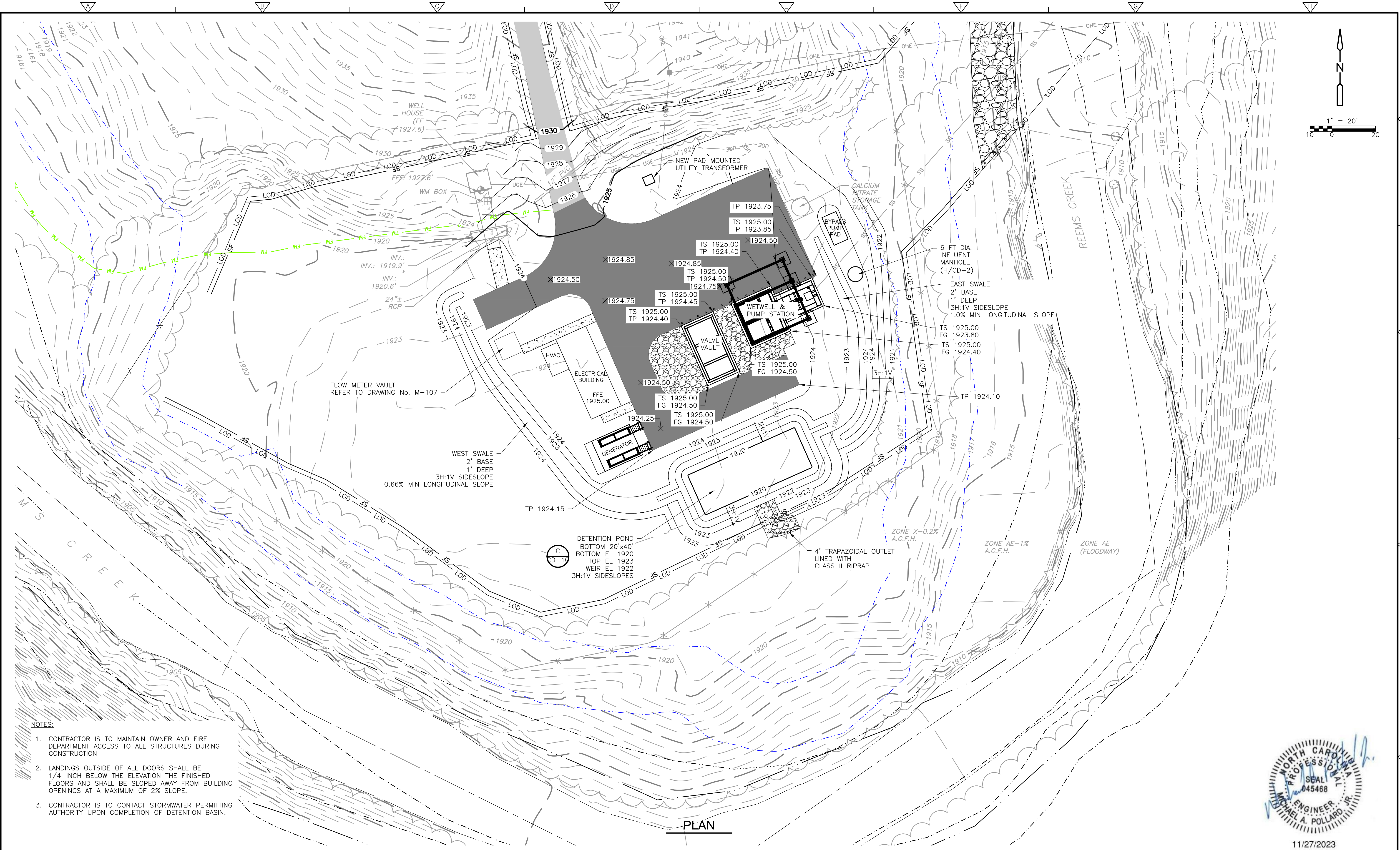
**Get the app now and be ready when your first meeting starts:**

<https://meet.goto.com/install>

---



XREFS: [CDMS\_2234, CWP003PS, CEP001ST, SWZ000PS-shored, SWZ000GP, CEP010WP] Images: []  
Last saved by: NANCYGONZALEZRN Time: 11/20/2023 1:27:47 PM  
C:\Users\NANCYGONZALEZRN\Documents\CDM Smith Inc\20176-265366 - WEAVERVILLE PS AND FORCEMAIN\Project Files\02 Civil (C)\10 CADD\C105PSGD.dwg  
©2023 CDM SMITH ALL RIGHTS RESERVED.  
REUSE OF DOCUMENTS: THESE DOCUMENTS AND DESIGNS PROVIDED BY PROFESSIONAL SERVICE, INCORPORATED HEREIN, ARE THE PROPERTY OF CDM SMITH AND ARE NOT TO BE USED, IN WHOLE OR PART, FOR ANY OTHER PROJECT WITHOUT THE WRITTEN AUTHORIZATION OF CDM SMITH.



NOTES:

1. CONTRACTOR IS TO MAINTAIN OWNER AND FIRE DEPARTMENT ACCESS TO ALL STRUCTURES DURING CONSTRUCTION
2. LANDINGS OUTSIDE OF ALL DOORS SHALL BE 1/4-INCH BELOW THE ELEVATION THE FINISHED FLOORS AND SHALL BE SLOPED AWAY FROM BUILDING OPENINGS AT A MAXIMUM OF 2% SLOPE.
3. CONTRACTOR IS TO CONTACT STORMWATER PERMITTING AUTHORITY UPON COMPLETION OF DETENTION BASIN.

1	10/23	RNG	BM	ADDENDUM 1	
REV. NO.	DATE	DRWN	CHKD	REMARKS	

DESIGNED BY:	B. MASON
DRAWN BY:	R. MADHURA
SHEET CHK'D BY:	M. POLLARD
CROSS CHK'D BY:	C. KOLKHORST
APPROVED BY:	B. MASON
DATE:	OCTOBER 2023

CDM  
Smith

4600 Park Road  
Charlotte, NC 28203  
Tel: (704) 342-4546

MSD OF BUNCOMBE COUNTY, NORTH CAROLINA

WEAVERVILLE PUMP STATION AND  
FORCE MAIN SYSTEM IMPROVEMENTS

PUMP STATION 1  
GRADING AND DRAINAGE PLAN

PROJECT NO. 20176-265366  
FILE NAME: C105PSGD.DWG

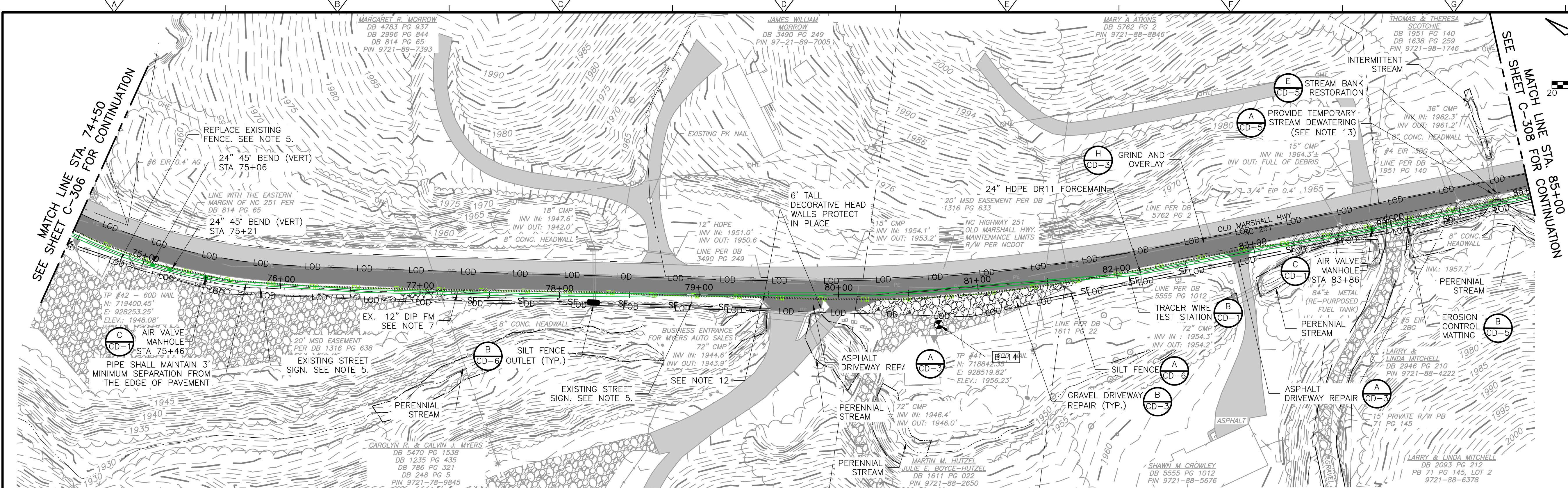
SHEET NO.  
C-105



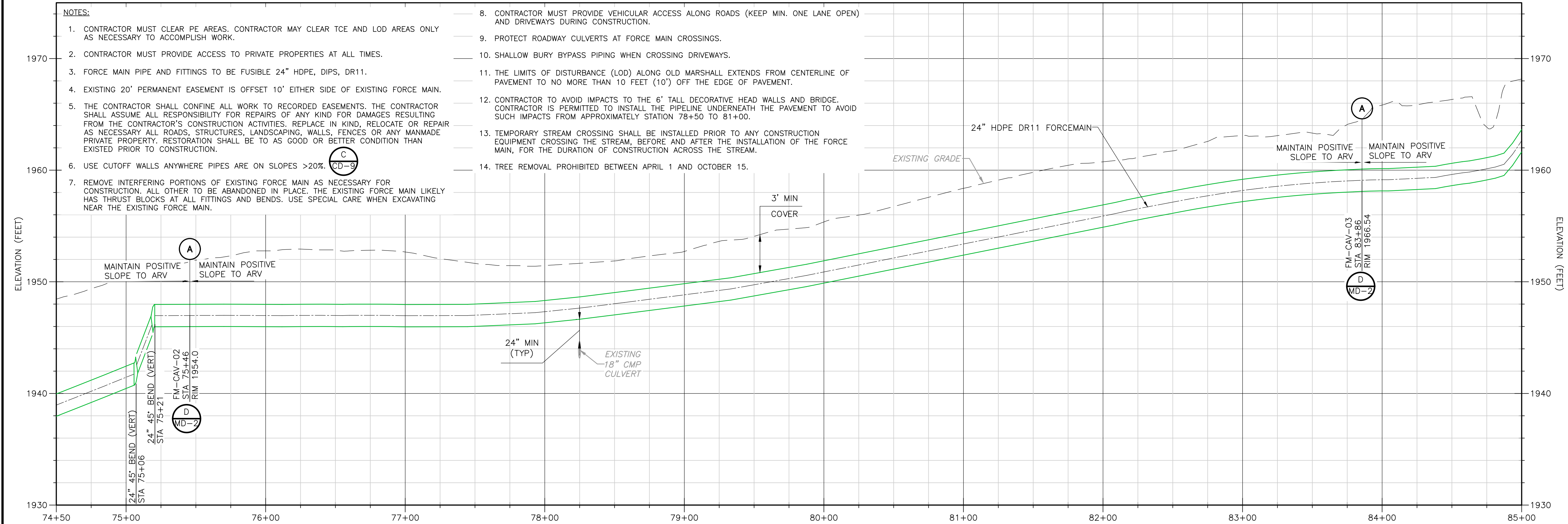
11/27/2023



XREFS: [CDMS\_2234, CWP004FM, CEP010VP, CEP001ST] Images: []  
Last saved by: NANCY GONZALEZ RN Time: 10/26/2023 6:15:59 PM  
C:\Users\forcegonzalezr\OneDrive\CDM Smith Inc\20176-265366 - WEAVERVILLE PS AND FORCEMAIN\Project Files\02 Civil (C)\10 CADD\C307FMPP.dwg  
© 2023 CDM SMITH ALL RIGHTS RESERVED.  
REUSE OF DOCUMENTS: THESE DOCUMENTS AND DESIGNS PROVIDED BY PROFESSIONAL SERVICE, INCORPORATED HEREIN, ARE THE PROPERTY OF CDM SMITH AND ARE NOT TO BE USED, IN WHOLE OR PART, FOR ANY OTHER PROJECT WITHOUT THE WRITTEN AUTHORIZATION OF CDM SMITH.



PLAN



PROFILE

HORIZONTAL SCALE: 1" = 40'  
VERTICAL SCALE: 1" = 5'

REV. NO.	DATE	DRWN	CHKD	REMARKS
1	10/23	RNG	MP	ADDENDUM 1

DESIGNED BY: R. NANCE-GONZALEZ  
DRAWN BY: L. VIDYAVATHI  
SHEET CHK'D BY: M. POLLARD  
CROSS CHK'D BY: D. HEISER  
APPROVED BY: M. POLLARD  
DATE: OCTOBER 2023

**CDM Smith**  
4600 Park Road  
Charlotte, NC 28203  
Tel: (704) 342-4546

MSD OF BUNCOMBE COUNTY, NORTH CAROLINA  
**WEAVERVILLE PUMP STATION AND  
FORCE MAIN SYSTEM IMPROVEMENTS**

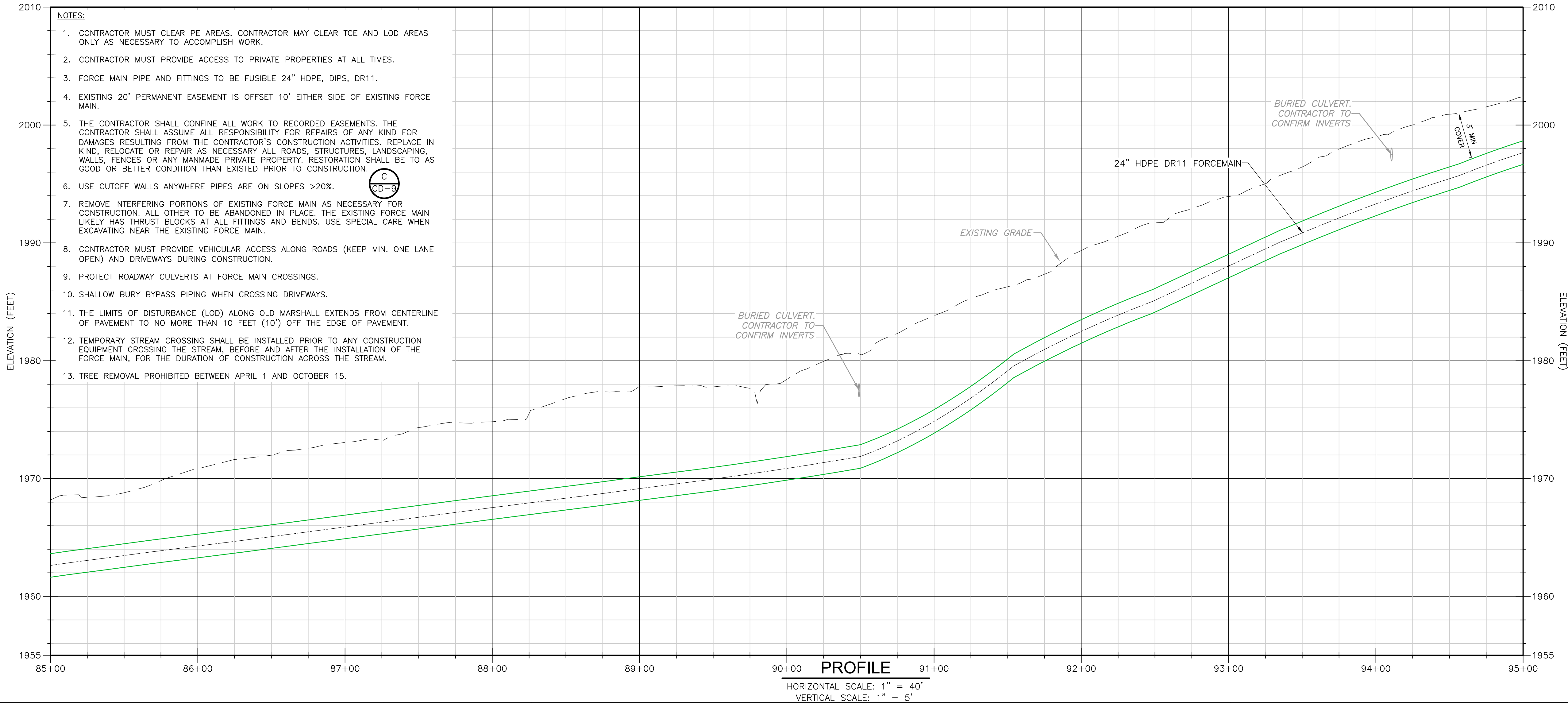
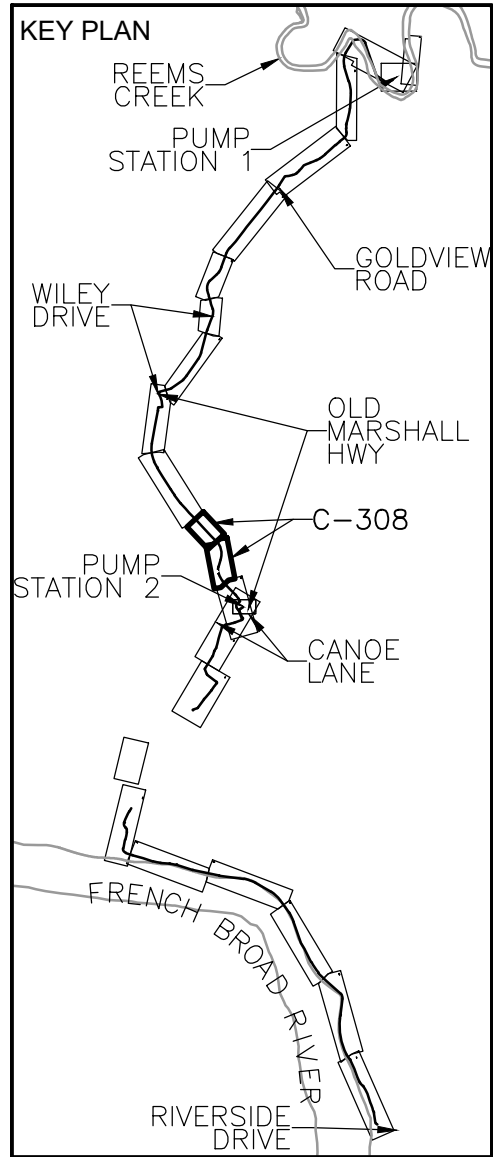
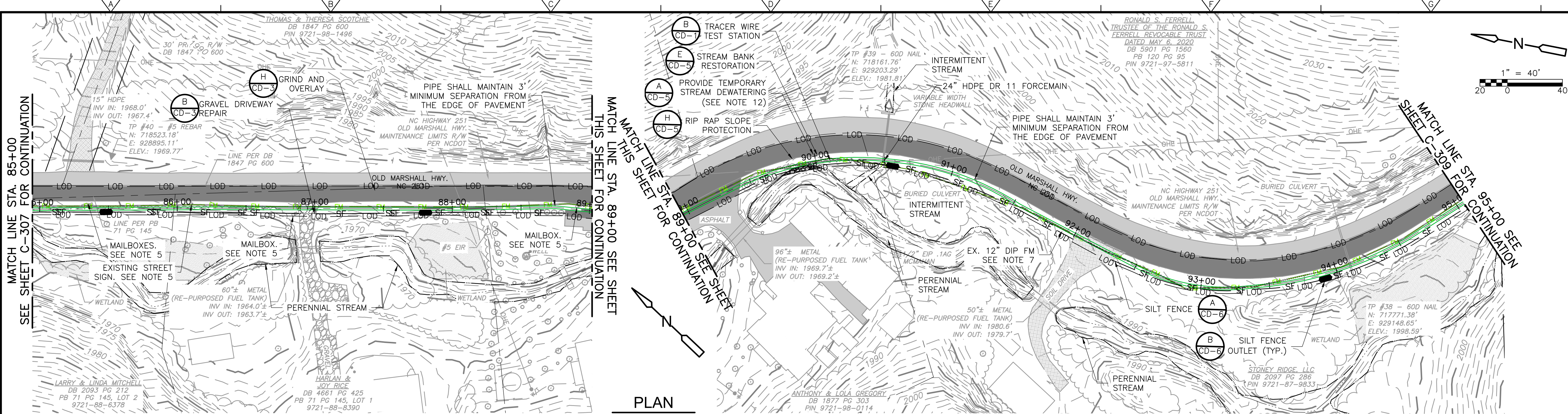
**OLD MARSHALL HWY FORCEMAIN  
PLAN AND PROFILE  
STA 74+50 THRU STA 85+00**

PROJECT NO. 20176-265366  
FILE NAME: C307FMPP.DWG  
SHEET NO.  
**C-307**

ISSUED FOR BID



XREFS: [CDMS\_2234\_CEP010VP\_CWP004FM\_CEP001ST] Images: [ ]  
Last saved by: NANCYGONZALEZRN Time: 10/26/2023 6:15:49 PM  
C:\Users\jorcedgonzalezr\Documents\CDM Smith Inc\20176-265366 - WEAVERVILLE PS AND FORCEMAIN\Project Files\02 Civil (C)\10 CADD\C308FMPP.dwg  
©2023 CDM SMITH ALL RIGHTS RESERVED.  
REUSE OF DOCUMENTS: THESE DOCUMENTS AND DESIGNS PROVIDED BY PROFESSIONAL SERVICE, INCORPORATED HEREIN, ARE THE PROPERTY OF CDM SMITH AND ARE NOT TO BE USED, IN WHOLE OR PART, FOR ANY OTHER PROJECT WITHOUT THE WRITTEN AUTHORIZATION OF CDM SMITH.



REV. NO.	DATE	DRWN	CHKD	REMARKS
1	10/23	RNG	MP	ADDENDUM 1

DESIGNED BY: R. NANCE-GONZALEZ
DRAWN BY: L. VIDYAVATHI
SHEET CHK'D BY: M. POLLARD
CROSS CHK'D BY: D. HEISER
APPROVED BY: M. POLLARD
DATE: OCTOBER 2023



MSD OF BUNCOMBE COUNTY, NORTH CAROLINA

WEAVERVILLE PUMP STATION AND  
FORCE MAIN SYSTEM IMPROVEMENTS

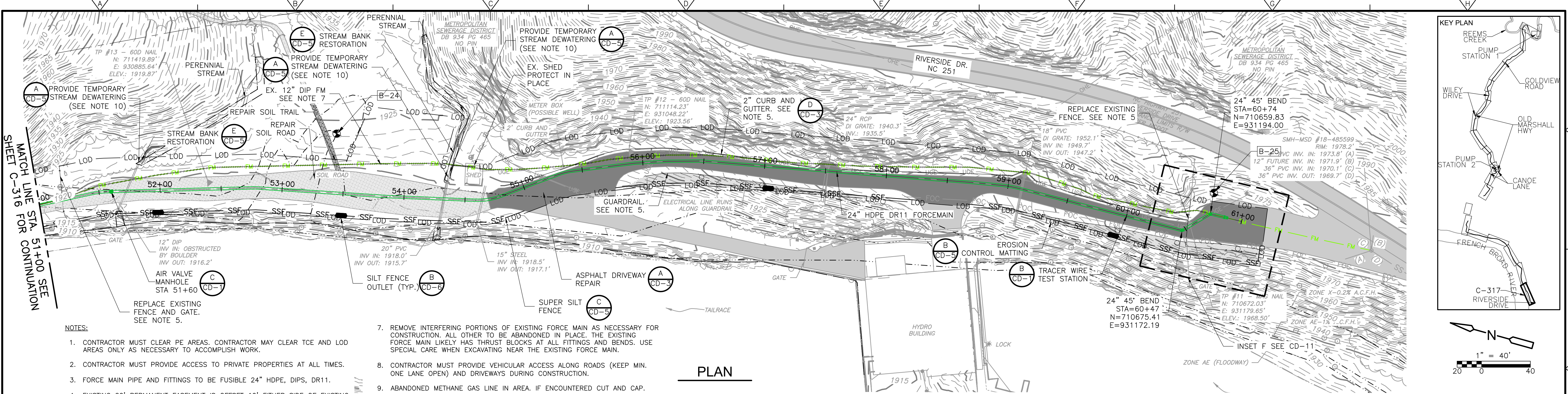
PROJECT NO. 20176-265366	FILE NAME: C308FMPP.DWG
SHEET NO. C-308	ISSUED FOR BID





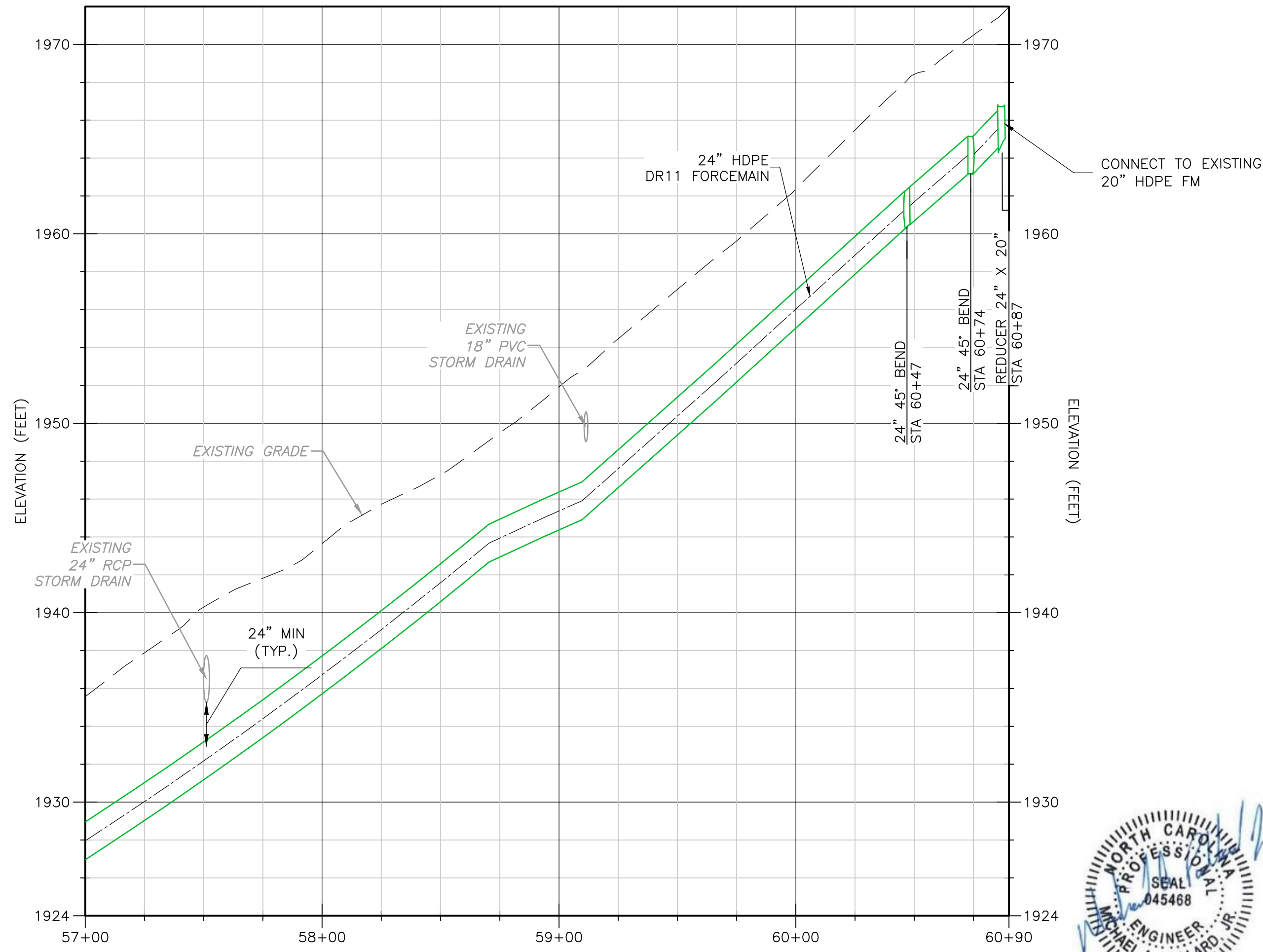
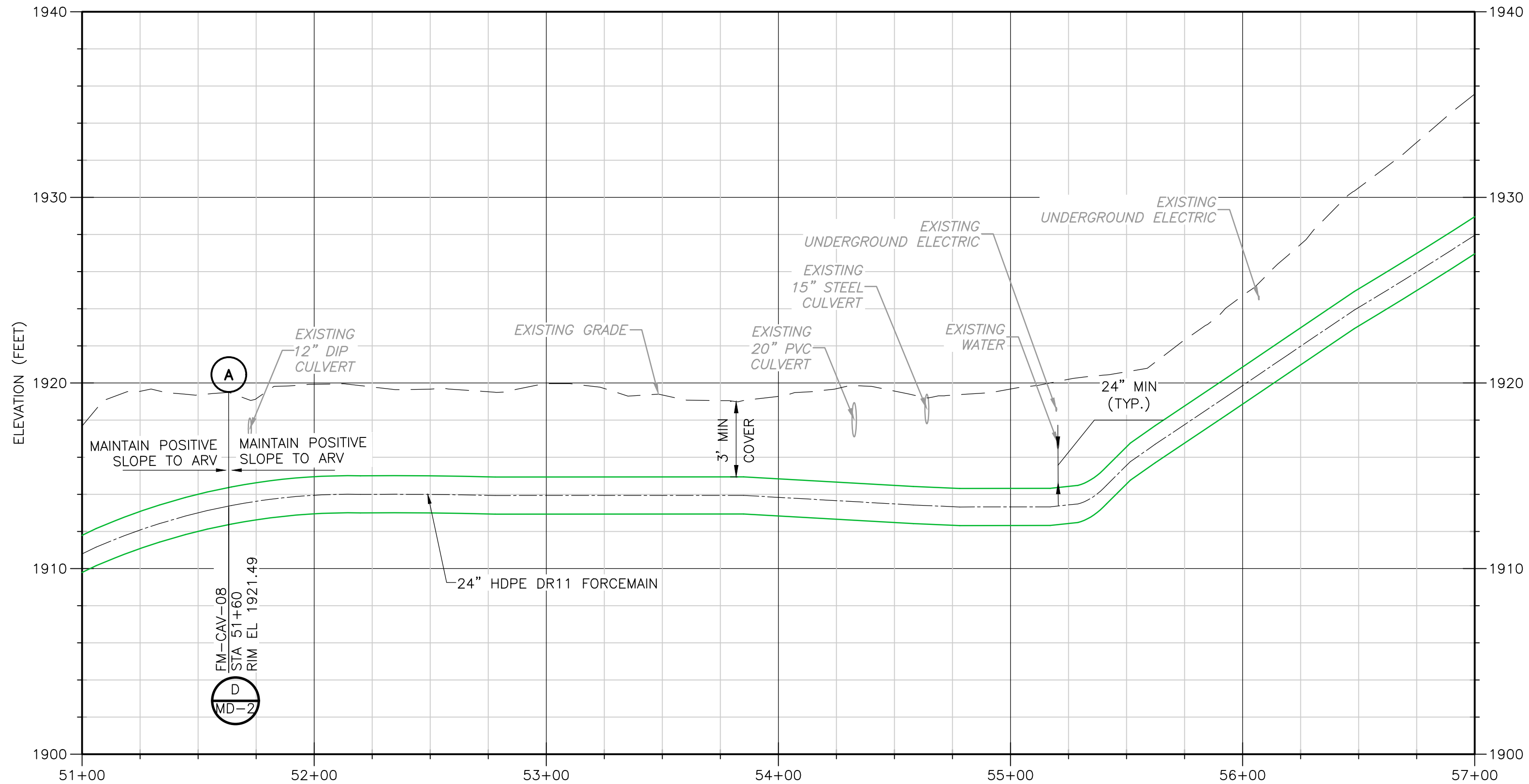


XREFS: [CDMS\_2234\_CWP004FM\_CEP01VP\_CEP001ST] Images: []  
Last saved by: NANCÉ-GONZALEZRN Time: 9/30/2023 10:04:55 PM  
C:\Users\Nancegonzalezr\Documents\CDM Smith Inc\20176-265366 - WEAVERVILLE PS AND FORCEMAIN\Project Files\02 Civil (C)\10 CADD\C317FMPP.dwg  
© 2023 CDM SMITH ALL RIGHTS RESERVED.  
REUSE OF DOCUMENTS: THESE DOCUMENTS AND DESIGNS PROVIDED BY PROFESSIONAL SERVICE, INCORPORATED HEREIN, ARE THE PROPERTY OF CDM SMITH AND ARE NOT TO BE USED, IN WHOLE OR PART, FOR ANY OTHER PROJECT WITHOUT THE WRITTEN AUTHORIZATION OF CDM SMITH.



NOTES:

- CONTRACTOR MUST CLEAR PE AREAS. CONTRACTOR MAY CLEAR TCE AND LOD AREAS ONLY AS NECESSARY TO ACCOMPLISH WORK.
- CONTRACTOR MUST PROVIDE ACCESS TO PRIVATE PROPERTIES AT ALL TIMES.
- FORCE MAIN PIPE AND FITTINGS TO BE FUSIBLE 24" HDPE, DIPS, DR11.
- EXISTING 20' PERMANENT EASEMENT IS OFFSET 10' EITHER SIDE OF EXISTING FORCE MAIN.
- THE CONTRACTOR SHALL CONFINE ALL WORK TO RECORDED EASEMENTS. THE CONTRACTOR SHALL ASSUME ALL RESPONSIBILITY FOR REPAIRS OF ANY KIND FOR DAMAGES RESULTING FROM THE CONTRACTOR'S CONSTRUCTION ACTIVITIES. REPLACE IN KIND, RELOCATE OR REPAIR AS NECESSARY ALL ROADS, STRUCTURES, LANDSCAPING, WALLS, FENCES OR ANY MANMADE PRIVATE PROPERTY. RESTORATION SHALL BE TO AS GOOD OR BETTER CONDITION THAN EXISTED PRIOR TO CONSTRUCTION.
- USE CUTOFF WALLS ANYWHERE PIPES ARE ON SLOPES >20%.
- REMOVE INTERFERING PORTIONS OF EXISTING FORCE MAIN AS NECESSARY FOR CONSTRUCTION. ALL OTHER TO BE ABANDONED IN PLACE. THE EXISTING FORCE MAIN LIKELY HAS THRUST BLOCKS AT ALL FITTINGS AND BENDS. USE SPECIAL CARE WHEN EXCAVATING NEAR THE EXISTING FORCE MAIN.
- CONTRACTOR MUST PROVIDE VEHICULAR ACCESS ALONG ROADS (KEEP MIN. ONE LANE OPEN) AND DRIVEWAYS DURING CONSTRUCTION.
- ABANDONED METHANE GAS LINE IN AREA. IF ENCOUNTERED CUT AND CAP.
- TEMPORARY STREAM CROSSING SHALL BE INSTALLED PRIOR TO ANY CONSTRUCTION EQUIPMENT CROSSING THE STREAM, BEFORE AND AFTER THE INSTALLATION OF THE FORCE MAIN, FOR THE DURATION OF CONSTRUCTION ACROSS THE STREAM.
- TREE REMOVAL PROHIBITED BETWEEN APRIL 1 AND OCTOBER 15.



REV. NO.	DATE	DRWN	CHKD	REMARKS
1	11/23	RNG	MP	ADDENDUM 1

DESIGNED BY: R. NANCE-GONZALEZ  
DRAWN BY: L. VIDYAVATHI  
SHEET CHK'D BY: M. POLLARD  
CROSS CHK'D BY: D. HEISER  
APPROVED BY: M. POLLARD  
DATE: OCTOBER 2023

**CDM Smith**  
4600 Park Road  
Charlotte, NC 28203  
Tel: (704) 342-4546

MSD OF BUNCOMBE COUNTY, NORTH CAROLINA  
WEAVERVILLE PUMP STATION AND  
FORCE MAIN SYSTEM IMPROVEMENTS

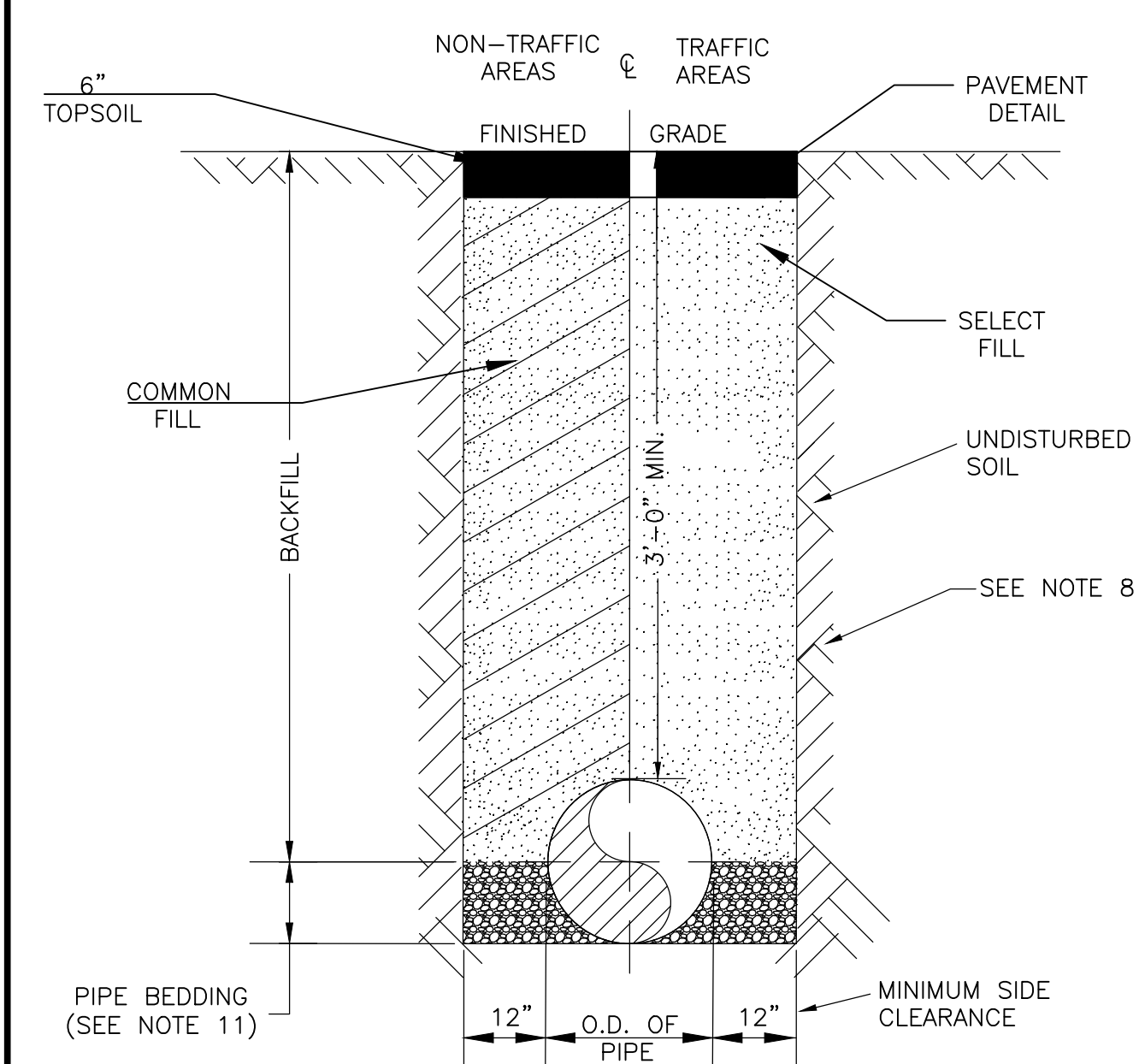
FRENCH BROAD RIVER FORCEMAIN  
PLAN AND PROFILE  
STA 51+00 THRU STA 60+86

PROJECT NO. 20176-265366  
FILE NAME: C317FMPP.DWG  
SHEET NO.  
**C-317**

ISSUED FOR BID

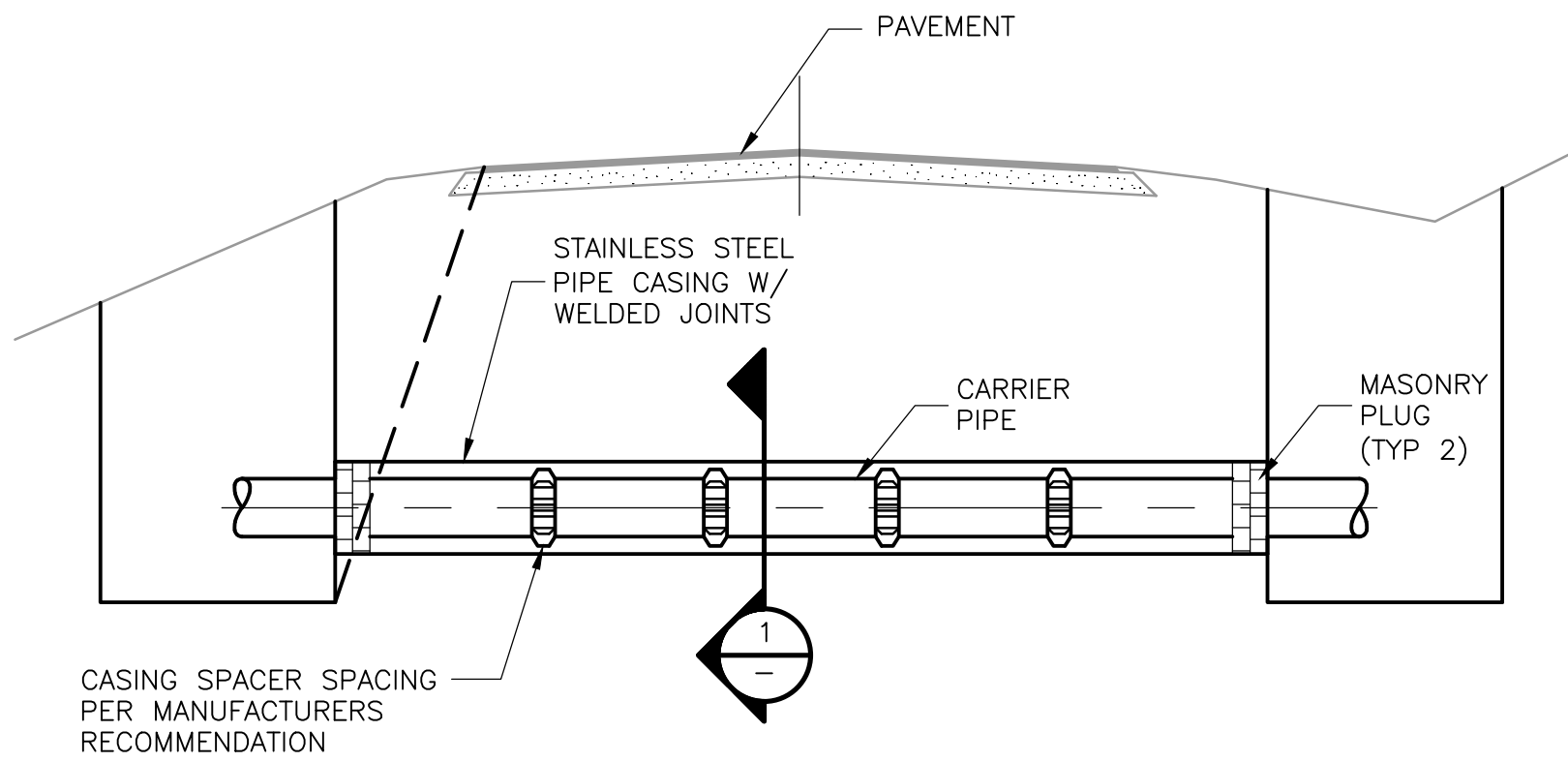


XREFS: [CDMS\_2234] Images: [ ]  
Last saved by: NANCEGONZALEZRN Time: 10/26/2023 4:57:29 PM  
C:\Users\Nancegonzalezr\Documents\CDM Smith Inc\20176-265366 - WEAVERVILLE PS AND FORCEMAIN\Project Files\02 Civil (C)\10 CAD\CD09MSDT.dwg  
©2023 CDM SMITH ALL RIGHTS RESERVED.  
REUSE OF DOCUMENTS: THESE DOCUMENTS AND DESIGNS PROVIDED BY PROFESSIONAL SERVICE, INCORPORATED HEREIN, ARE THE PROPERTY OF CDM SMITH AND ARE NOT TO BE USED, IN WHOLE OR PART, FOR ANY OTHER PROJECT WITHOUT THE WRITTEN AUTHORIZATION OF CDM SMITH.

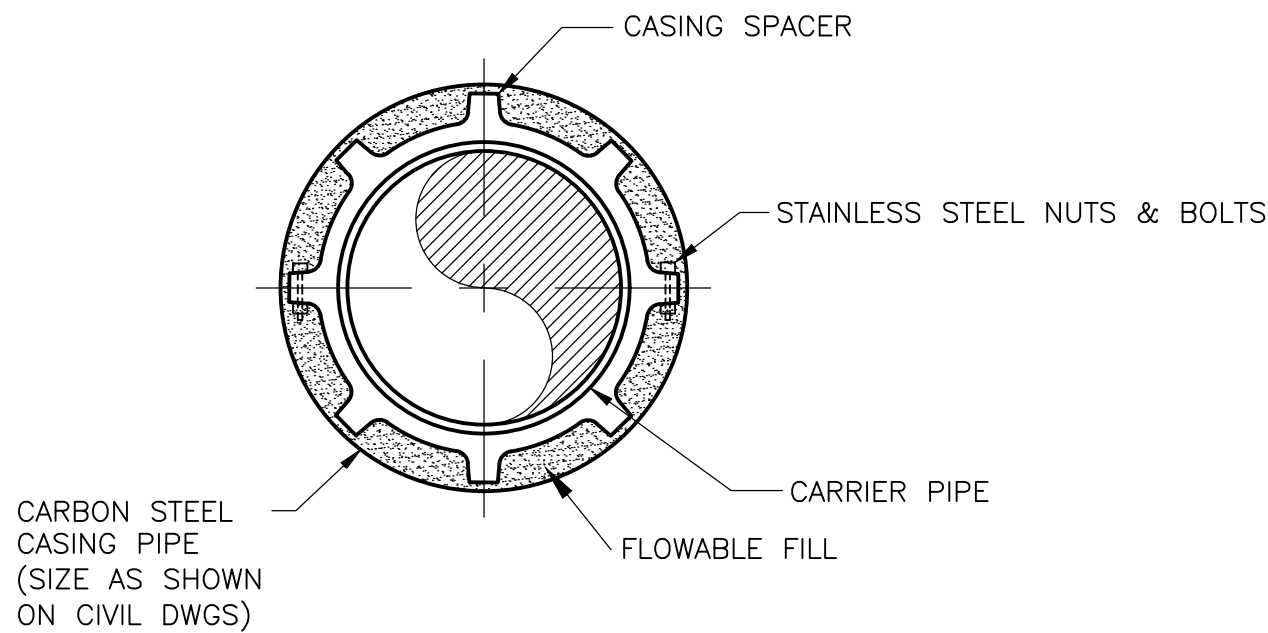


- NOTES:
- FOR TRENCHES REQUIRING SHORING AND BRACING, DIMENSIONS SHALL BE TAKEN FROM THE INSIDE FACE OF THE SHORING AND BRACING.
  - DEWATERING SHALL EXTEND TO 2' BELOW TRENCH BOTTOM DURING ALL EXCAVATION, PIPE INSTALLATION AND BACKFILL OPERATIONS. REFER TO SECTION 312319 FOR DEWATERING REQUIREMENTS.
  - SELECT FILL SHALL BE COMPACTED TO AT LEAST 95 PERCENT OF THE MAXIMUM DRY DENSITY IN ACCORDANCE WITH ASTM D1557 WITHIN 3 PERCENTAGE POINTS OF OPTIMUM. SELECT COMMON FILL SHOULD BE COMPACTED IN MAXIMUM LOOSE LIFT THICKNESS OF 8 INCHES AND SHALL CONTAIN NO STONES GREATER THAN 2 INCHES IN DIAMETER.
  - COMMON FILL SHALL BE COMPACTED TO AT LEAST 90 PERCENT OF THE MAXIMUM DRY DENSITY IN ACCORDANCE WITH ASTM D1557 WITHIN 3 PERCENTAGE POINTS OF OPTIMUM. COMMON FILL SHOULD BE COMPACTED IN MAXIMUM LOOSE LIFT THICKNESS OF 12 INCHES AND SHALL CONTAIN NO STONES GREATER THAN 6 INCHES IN DIAMETER.
  - IF UNSUITABLE FOUNDATION IS ENCOUNTERED REMOVE UNSUITABLE MATERIAL TO REACH SUITABLE FOUNDATION, OR TO A DEPTH OF 4 FEET MAX CONFIRM WITH ENGINEER. REPLACE WITH COMPACTED STRUCTURAL FILL OR CRUSHED (#57 STONE), SEE SPECIFICATIONS.
  - SHEETING SHALL BE DRIVEN BELOW THE UTILITY INVERT IF REQUIRED FOR LATERAL SUPPORT OR UNSUITABLE MATERIAL REMOVAL. WHERE DRIVEN BELOW PIPE SPRINGLINE, SHEETING SHALL BE CUT OFF A MIN OF 12" ABOVE TOP OF PIPE OR HIGHER, AS AUTHORIZED BY THE ENGINEER, AND LEFT IN PLACE. IN NO CASE SHALL SHEETING LEFT IN PLACE EXTEND HIGHER THAN 18" BELOW SURFACE GRADE UNLESS SPECIFICALLY APPROVED. BRACING SHALL BE PROVIDED AS REQUIRED.
  - EXCAVATED MATERIALS MIXED WITH DELETERIOUS SUBSTANCES DURING CONSTRUCTION SHALL NOT BE USED FOR BACKFILLING.
  - TRENCH SLOPES SHALL BE AS REQUIRED BY OSHA. NCDOT ROADWAY AND PAVEMENT SHALL BE RESTORED IN ACCORDANCE WITH NCDOT DESIGN STANDARDS.
  - TRENCH BOXES SHALL NOT EXTEND BELOW THE SPRINGLINE OF THE PIPE, UNLESS APPROVED BY THE ENGINEER ON A PER-CASE BASIS.
  - REFER TO NOTE 6 SHEET G-3 FOR SHORING WITHIN ZONE OF INFLUENCE OF NCDOT PAVEMENT.
  - FOR SUBGRADES CONSISTING OF FINE-GRAINED SOIL (I.E.: CLAYS AND SILTS), PIPE BEDDING SHALL CONSIST OF CRUSHED STONE EXTENDING FROM 6 INCHES BELOW THE PIPE TO THE PIPE SPRINGLINE.

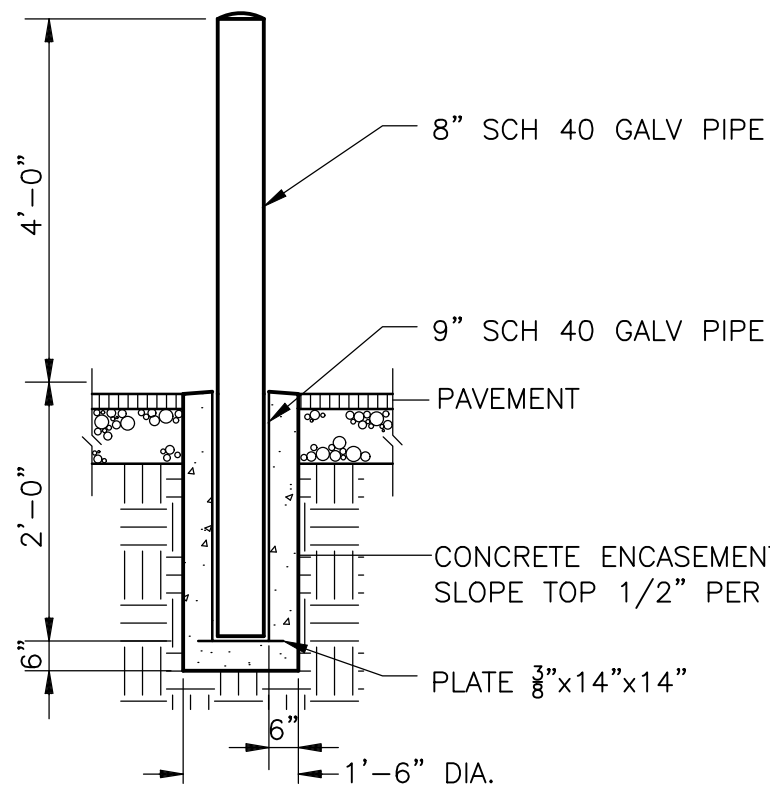
TRENCH DETAIL  
DETAIL A  
NTS



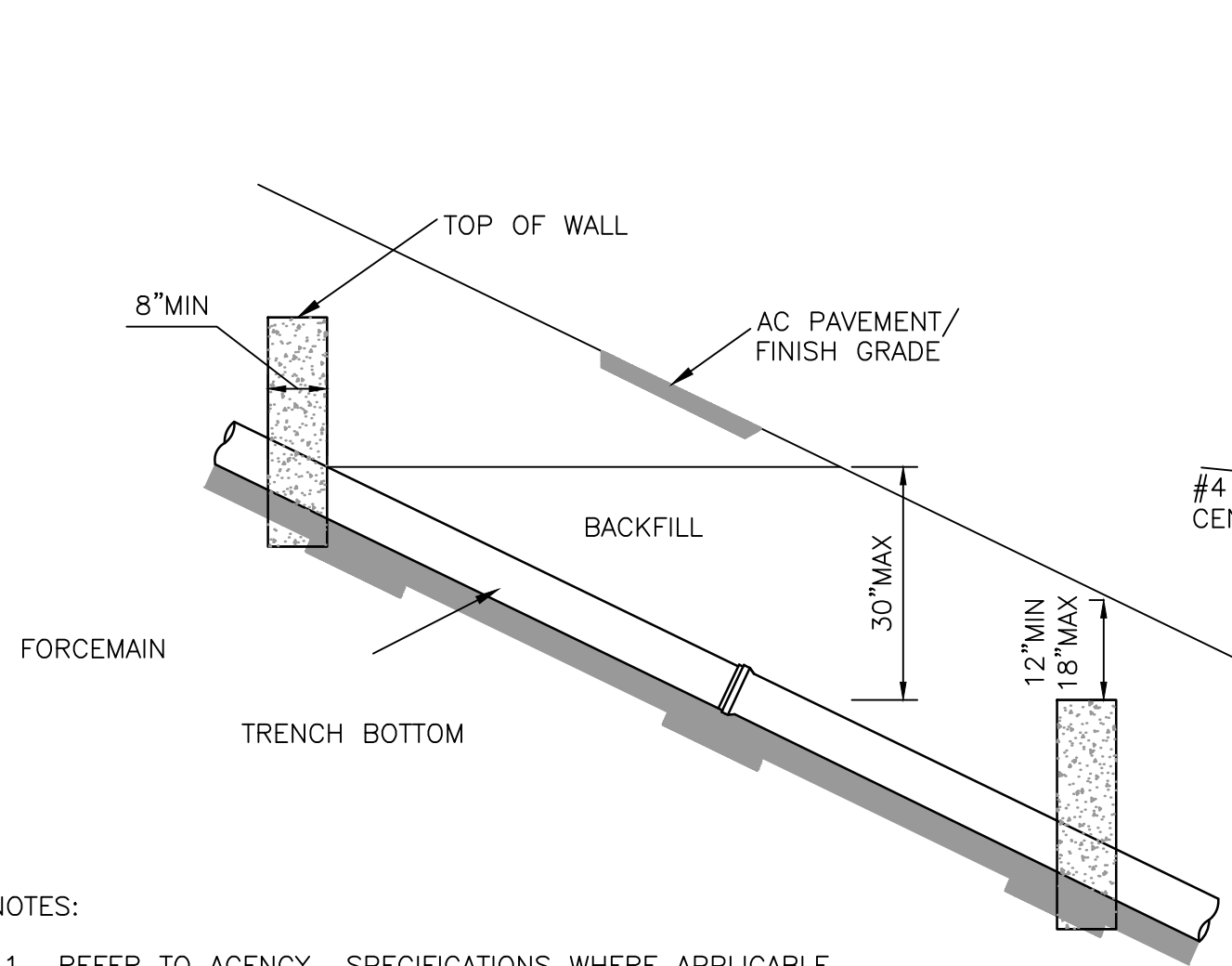
- NOTES:
- NO PIPE SHALL BE SUPPORTED BY BELL.
  - CASING PIPE WALL THICKNESS SHALL BE 1/2" THICK



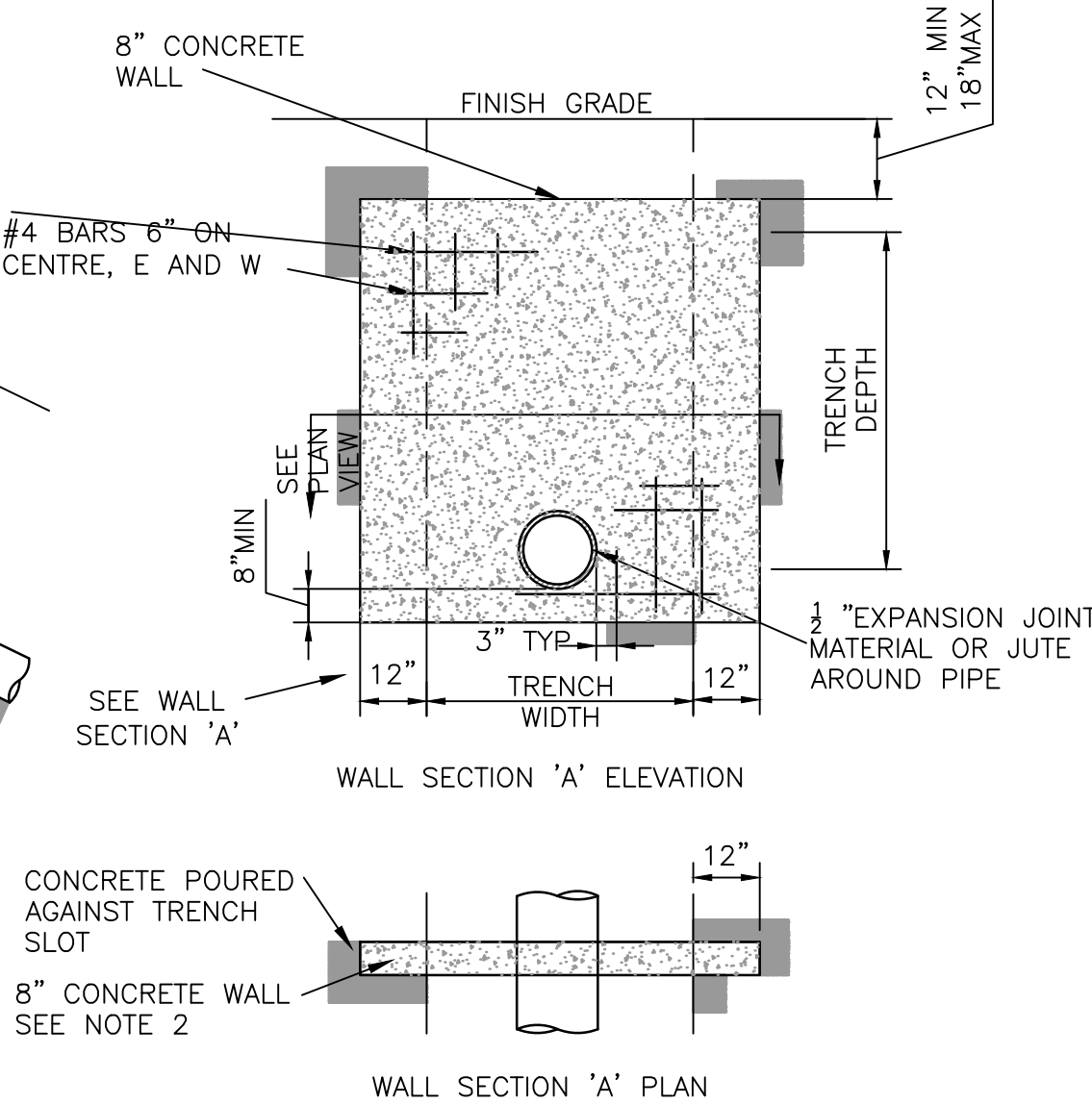
PIPE JACKING DETAIL  
DETAIL B  
NTS



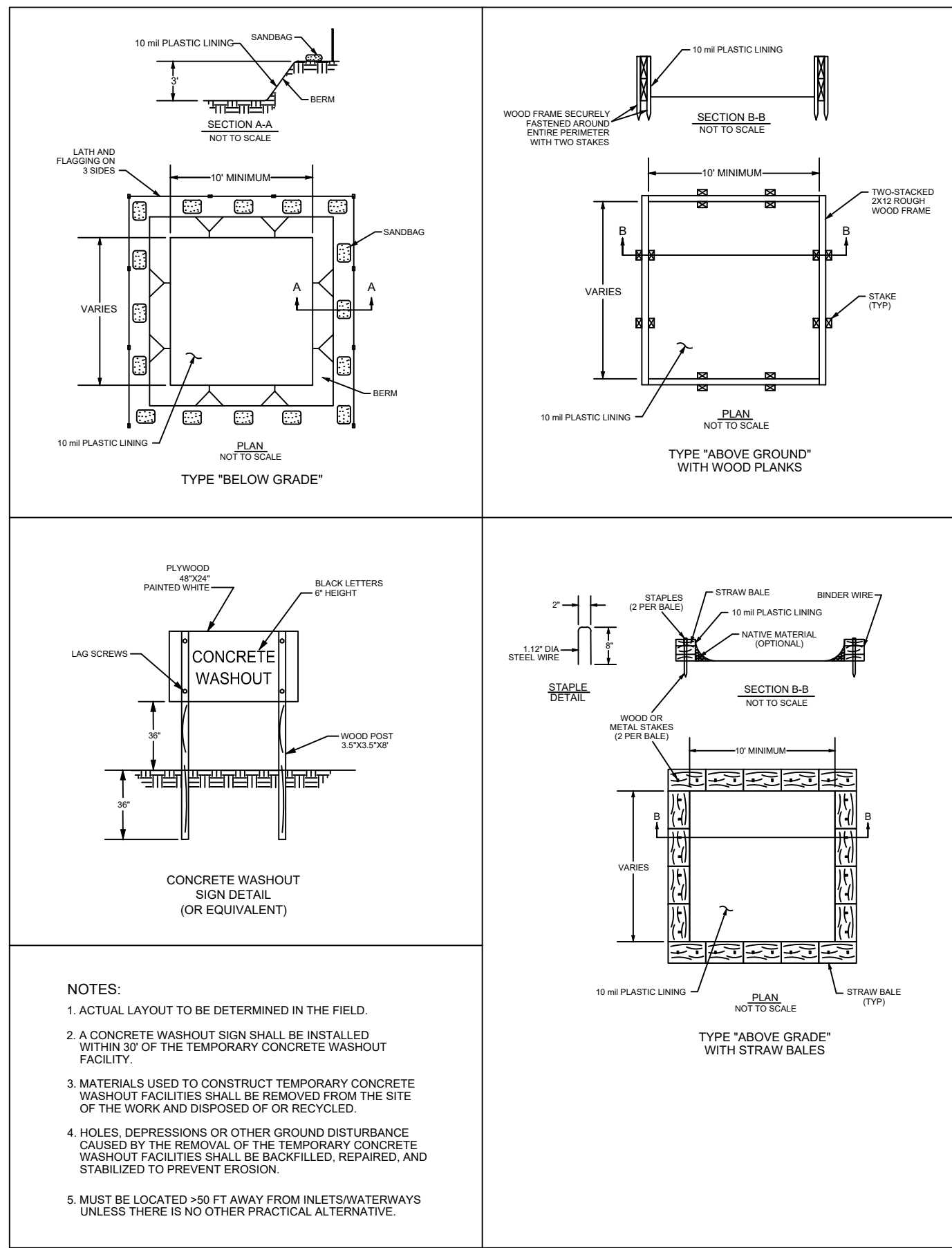
REMOVABLE BOLLARD  
DETAIL D  
NTS



- NOTES:
- REFER TO AGENCY SPECIFICATIONS WHERE APPLICABLE.
  - FOR USE AS TRENCH BACKFILL STABILIZATION IN TRAVELED AREAS.
  - THE DETAILS SHOWN REPRESENT THE MINIMUM REQUIRED. THE ENGINEER OF WORK IS REQUIRED TO PROVIDE A SUBMITTAL TO AGENCY OF JURISDICTION FOR REVIEW AND APPROVAL BY THE AGENCY'S ENGINEER PRIOR TO INSTALLATION.
  - WALLS SHALL BE REINFORCED CONCRETE OR 8"x8"x16" CONCRETE BLOCK, REINFORCED AND ALL CORES FILLED WITH GROUT, SEE SPECIFICATIONS.

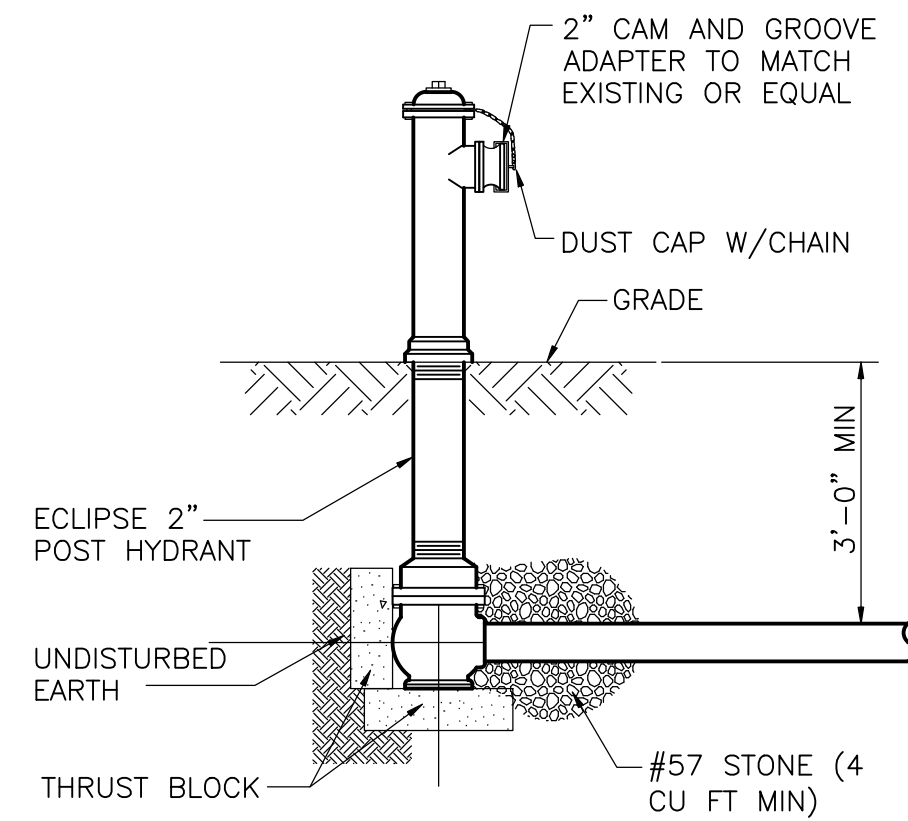


CUTOFF WALLS FOR GRADES 20% TO 50%  
DETAIL C  
NTS



- NOTES:
- ACTUAL LAYOUT TO BE DETERMINED IN THE FIELD.
  - A CONCRETE WASHOUT SIGN SHALL BE INSTALLED WITHIN 30' OF THE TEMPORARY CONCRETE WASHOUT FACILITY.
  - MATERIALS USED TO CONSTRUCT TEMPORARY CONCRETE WASHOUT FACILITIES SHALL BE REMOVED FROM THE SITE OF THE WORK AND DISPOSED OF OR RECYCLED.
  - HOLES, DEPRESSIONS OR OTHER GROUND DISTURBANCE CAUSED BY THE REMOVAL OF THE TEMPORARY CONCRETE WASHOUT FACILITIES SHALL BE BACKFILLED, REPAIRED, AND STABILIZED TO PREVENT EROSION.
  - MUST BE LOCATED >50 FT AWAY FROM INLETS/WATERWAYS UNLESS THERE IS NO OTHER PRACTICAL ALTERNATIVE.

CONCRETE WASHOUT  
DETAIL E  
NTS



YARD HYDRANT  
DETAIL F  
NTS



11/27/2023

REV. NO.	DATE	DRWN	CHKD	REMARKS
1	11/23	RNG	MP	ADDENDUM 1

DESIGNED BY: R. NANCE-GONZALEZ  
DRAWN BY: R. MADHURA  
SHEET CHK'D BY: M. POLLARD  
CROSS CHK'D BY: D. HEISER  
APPROVED BY: M. POLLARD  
DATE: OCTOBER 2023

**CDM Smith**  
4600 Park Road  
Charlotte, NC 28203  
Tel: (704) 342-4546

MSD OF BUNCOMBE COUNTY, NORTH CAROLINA  
WEAVERVILLE PUMP STATION AND  
FORCE MAIN SYSTEM IMPROVEMENTS

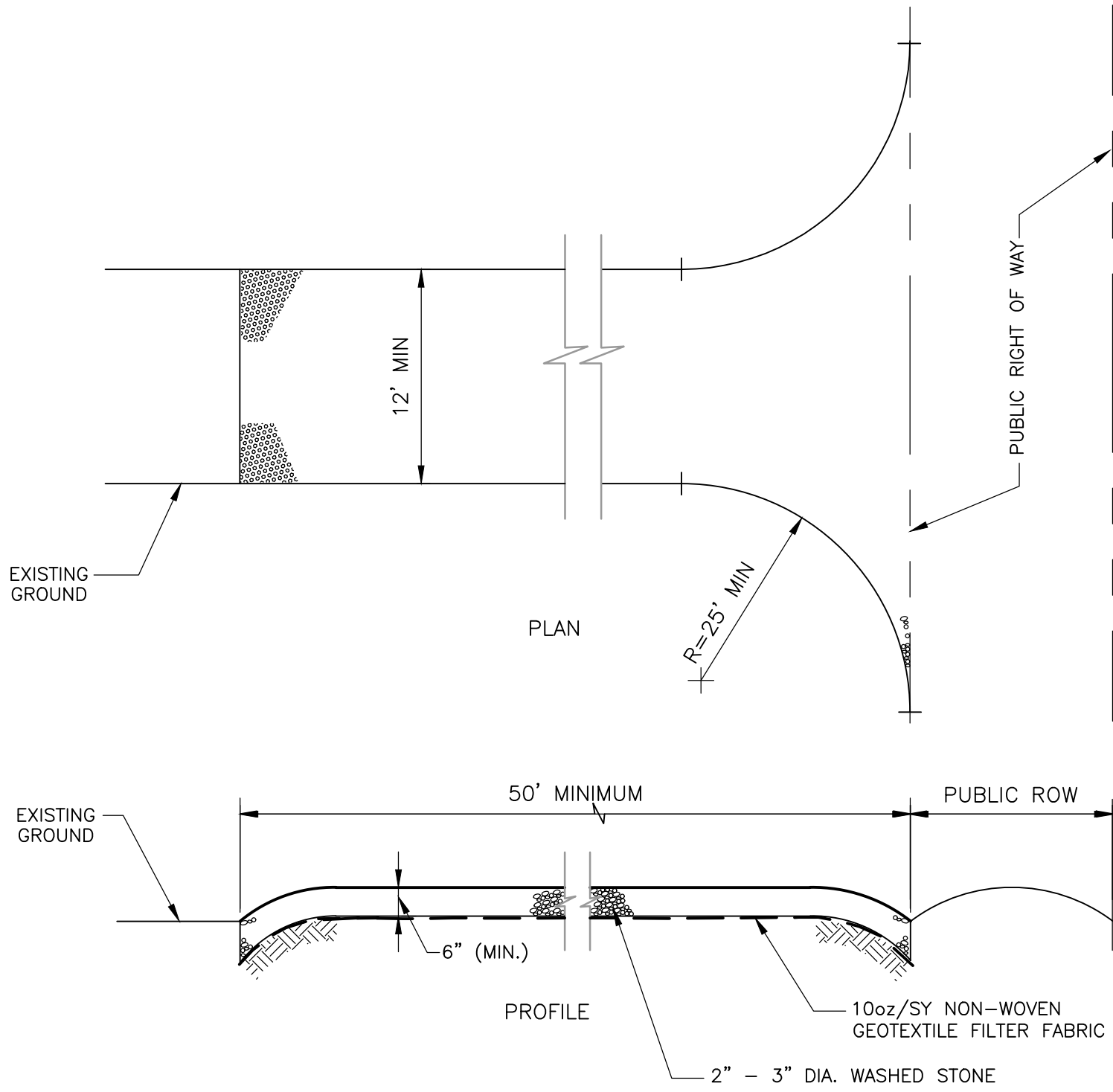
MISCELLANEOUS DETAILS I

PROJECT NO. 20176-265366  
FILE NAME: CD09MSDT.DWG  
SHEET NO.  
**CD-9**

ISSUED FOR BID



XREFS: [CDMS\_2234] Images: [ ]  
Last saved by: NANCE-GONZALEZRN Time: 10/26/2023 4:58:17 PM  
C:\Users\Nancegonzalezr\Documents\CDM Smith Inc\20176-265366 - WEAVERVILLE PS AND FORCE MAIN\Project Files\02 Civil (C)\10 CADD\CD10SBDT.dwg  
©2023 CDM SMITH ALL RIGHTS RESERVED.  
REUSE OF DOCUMENTS: THESE DOCUMENTS AND DESIGNS PROVIDED BY PROFESSIONAL SERVICE, INCORPORATED HEREIN, ARE THE PROPERTY OF CDM SMITH AND ARE NOT TO BE USED, IN WHOLE OR PART, FOR ANY OTHER PROJECT WITHOUT THE WRITTEN AUTHORIZATION OF CDM SMITH.

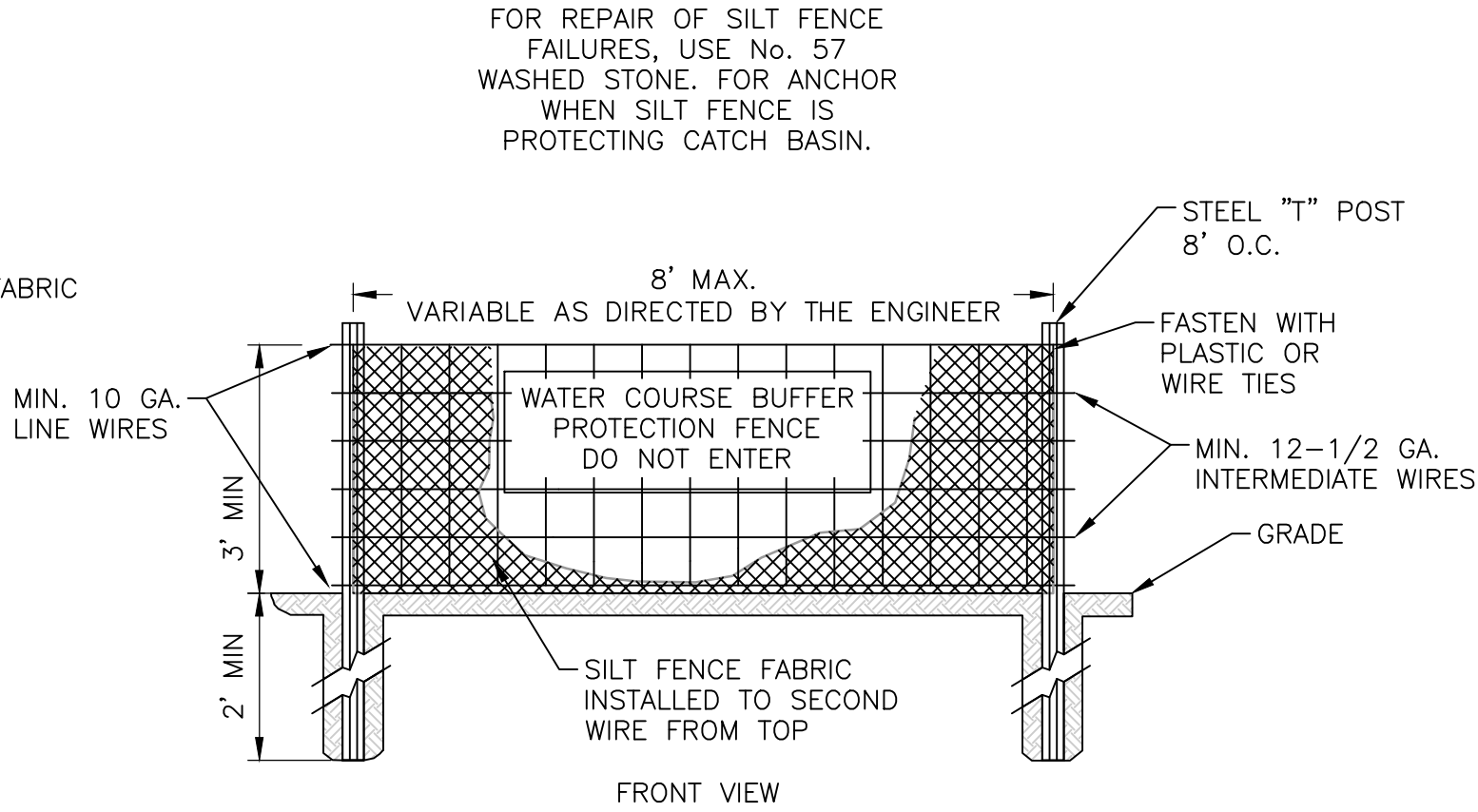
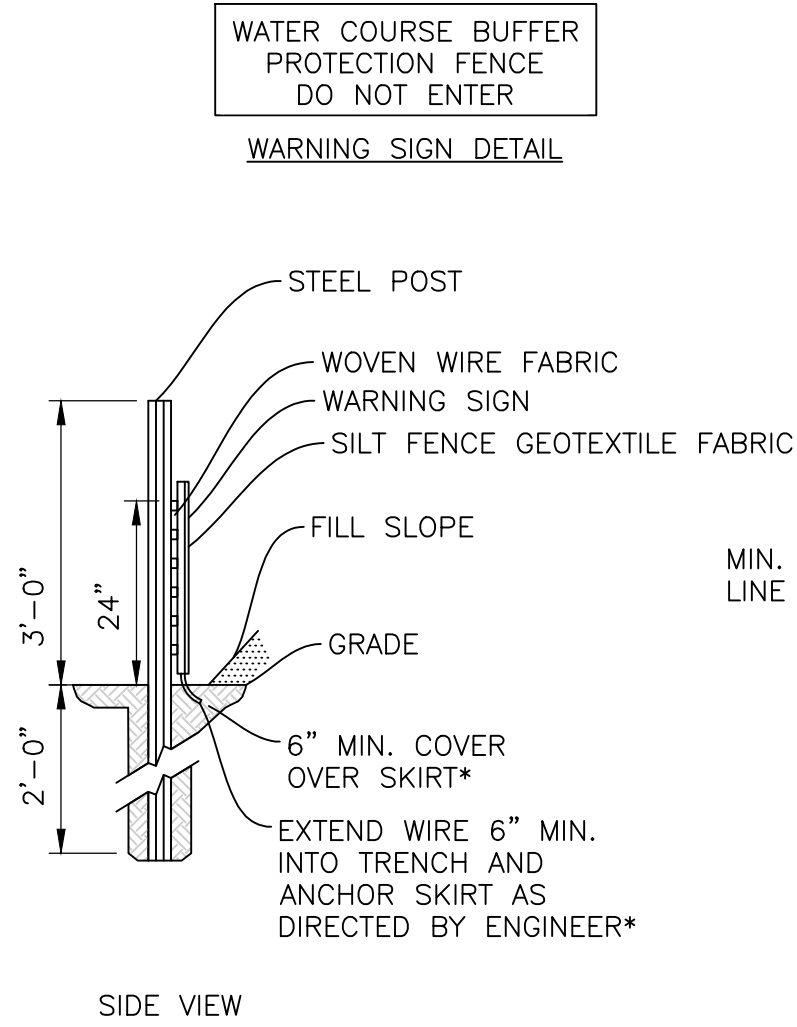


STABILIZED TEMPORARY CONSTRUCTION ENTRANCE

DETAIL A  
NOT TO SCALE

NOTES:

1. PROVIDE APPROPRIATE TRANSITION BETWEEN STABILIZED CONSTRUCTION ENTRANCE AND PUBLIC RIGHT-OF-WAY.
2. THE ENTRANCE SHALL BE MAINTAINED IN A CONDITION WHICH WILL PREVENT TRACKING OR FLOWING OF SEDIMENT ONTO PUBLIC RIGHT-OF-WAY. THIS MAY REQUIRE PERIODIC TOP DRESSING WITH ADDITIONAL STONE OR ADDING STONE TO THE LENGTH OF THE ENTRANCE.
3. REPAIR AND CLEANOUT ANY MEASURES USED TO TRAP SEDIMENT.
4. ALL SEDIMENT SPILLED, DROPPED, WASHED, OR TRACKED ONTO PUBLIC RIGHT-OF-WAY MUST BE REMOVED IMMEDIATELY.
5. ADD CRUSHED STONE TO TEMPORARY ACCESS ROADS AND STAGING AREAS AS NECESSARY TO MAINTAIN A FIRM SURFACE FREE OF RUTS AND MUDHOLES.
6. DIMENSIONS SHALL BE AS SHOWN ABOVE UNLESS OTHERWISE SHOWN ON DRAWINGS.

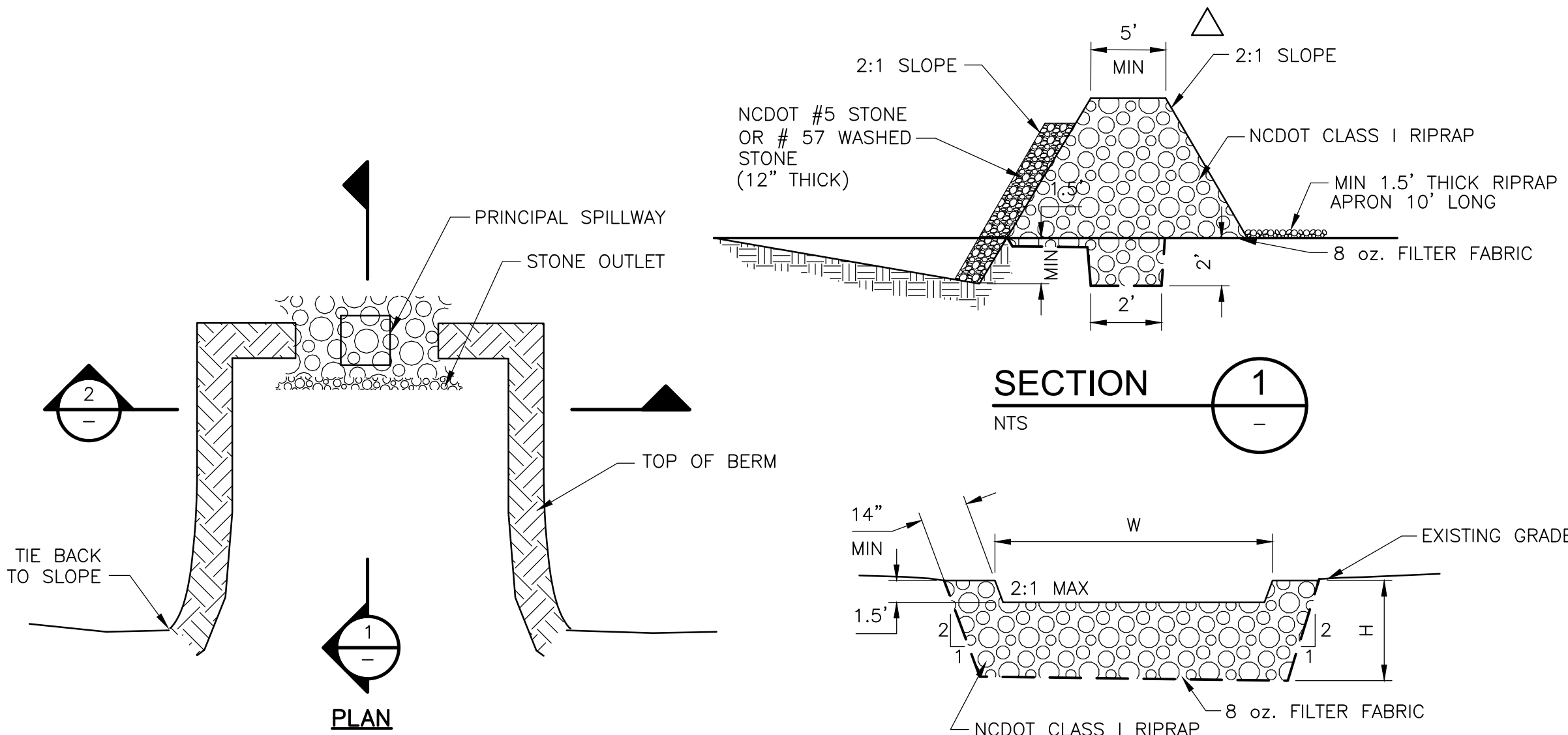


NOTES:

1. WARNING SIGNS TO BE MADE OF DURABLE, WEATHERPROOF MATERIAL.
2. LETTERS TO BE 3" HIGH MINIMUM, CLEARLY LEGIBLE AND SPACED AS DETAILED.
3. SIGNS SHALL BE PLACED AT 50' MAXIMUM INTERVALS.
4. FOR WATERCOURSE BUFFER PROTECTION AREAS LESS THAN 200' IN PERIMETER, PROVIDE NO LESS THAN ONE SIGN PER PROTECTION AREA.
5. ATTACH SIGNS SECURELY TO FENCE POSTS AND FABRIC.
6. MAINTAIN WATERCOURSE BUFFER PROTECTION FENCE THROUGHOUT DURATION OF PROJECT.
7. ADDITIONAL SIGNS MAY BE REQUIRED BASED ON ACTUAL FIELD CONDITIONS.
8. PLACE A SIGN AT EACH END OF LINEAR WATERCOURSE BUFFER PROTECTION AND 50' ON CENTER THEREAFTER.
9. END OF SILT FENCE SHALL BE TURNED UPHILL.
10. SEE N.C. STATE DENR PRACTICE & SPECIFICATION SEDIMENTS FENCE SECTION FOR CONDITIONS WHERE PRACTICE APPLIES AND PLANNING CONSIDERATIONS.

STREAM AND WETLANDS PROTECTION FENCE

DETAIL B  
NOT TO SCALE



DETENTION POND OUTLET

DETAIL C  
NTS

SECTION 1  
NTS

SECTION 2  
NTS

TEMPORARY SEDIMENT TRAPS							
BASIN NO.	STORAGE VOLUME (FT³)	DEPTH OF POOL (FT)	SURFACE AREA (FT²)	SURFACE DIMENSIONS LxW (FT)	WEIR WIDTH (W) (FT)	EMBANKMENT HEIGHT (H) (FT)	BOTTOM DIMENSIONS LxW (FT)
DP-1	3,550	2	2,350	38x62	4	3	25x50



11/27/2023

REV. NO.	DATE	DRWN	CHKD	REMARKS
1	10/23	RNG	MP	ADDENDUM 1

DESIGNED BY: R. NANCE-GONZALEZ  
DRAWN BY: R. MADHURA  
SHEET CHK'D BY: M. POLLARD  
CROSS CHK'D BY: D. HEISER  
APPROVED BY: M. POLLARD  
DATE: OCTOBER 2023



MSD OF BUNCOMBE COUNTY, NORTH CAROLINA

WEAVERVILLE PUMP STATION AND  
FORCE MAIN SYSTEM IMPROVEMENTS

MISCELLANEOUS DETAILS II

PROJECT NO. 20176-265366  
FILE NAME: CD10SBDT.DWG

SHEET NO.

CD-10

ISSUED FOR BID

SECTION 004153 - BID FORM

SUBMITTED \_\_\_\_\_  
(Date)

BY \_\_\_\_\_  
(Bidder)

PROJECT NAME: Metropolitan Sewerage District of Buncombe County  
Weaverville Pump Station and Forcemain Improvements

MSD Project No. 2019080

1. The undersigned Bidder proposes and agrees, if this Bid is accepted, to enter into an Agreement with Owner in the form included in the Contract Documents to perform and furnish all Work as specified or indicated in the Contract Documents for the Contract Price and within the Contract Time indicated in this Bid Form and the Agreement, and in accordance with the other terms and conditions of the Contract Documents.
2. Bidder accepts all of the terms and conditions of the Bidding Documents, including without limitation those dealing with the disposition of Bid Security.
3. In submitting this Bid, Bidder makes all representations required by the Instructions to Bidders and further warrants and represents that:

- (a) Bidder has examined copies of all the Bidding Documents, including the Advertisement for Bids, the Instructions to Bidders and of the following Addenda (receipt of all which is hereby acknowledged):

No. _____	Dated _____	No. _____	Dated _____
No. _____	Dated _____	No. _____	Dated _____
No. _____	Dated _____	No. _____	Dated _____

- (b) Bidder has familiarized itself with the nature and extent of the Contract Documents, Work, site, locality, and all local conditions and Laws and Regulations that in any manner may affect cost, progress, performance or furnishing the Work.
- (c) Bidder has studied carefully all reports and drawings of subsurface conditions and drawings of physical conditions which are identified in the Supplementary Conditions in Section 007300.16, and accepts the determination set forth in the Supplementary Conditions of the extent of the technical data contained in such reports and drawings upon which Bidder is entitled to rely.
- (d) Bidder has obtained and carefully studied (or assumes responsibility for obtaining and carefully studying) all such examinations, investigations, explorations, tests and studies (in addition to or to supplement those referred to in



- (c) above) which pertain to the subsurface or physical conditions at the site or otherwise may affect the cost, progress, performance or furnishing of the Work at the Contract Price, within the Contract Time and in accordance with the other terms and conditions of the Contract Documents, including specifically the provisions of Article 5 of the Standard General Conditions of the Construction Contract; and no additional examinations, investigations, explorations, tests, reports or similar information or data are or will be required by Bidder for such purposes.
- (e) Bidder has reviewed and checked all information and data shown or indicated in the Contract Documents with respect to existing Underground Facilities at or contiguous to the site and assumes responsibility for the accurate location of said Underground Facilities. No additional examinations, investigations, explorations, tests, reports or similar information or data in respect of said Underground Facilities are or will be required by Bidder in order to perform and furnish the Work at the Contract Price, within the Contract Time and in accordance with the other terms and conditions of the Contract Documents, including specifically the provisions of Article 5 of the Standard General Conditions of the Construction Contract.
- (f) Bidder has correlated the results of all such observations, examinations, investigations, explorations, tests, reports and studies with the terms and conditions of the Contract Documents.
- (g) Bidder has given Engineer written notice of all conflicts, errors or discrepancies that it has discovered in the Contract Documents and the written resolution thereof by Engineer is acceptable to Bidder.
- (h) This Bid is genuine and not made in the interest of or on behalf of any undisclosed person, firm or corporation and is not submitted in conformity with any agreement or rules of any group, association, organization or corporation; Bidder has not directly or indirectly induced or solicited any other Bidder to submit a false or sham Bid; Bidder has not solicited or induced any person, firm or a corporation to refrain from bidding; and Bidder has not sought by collusion to obtain for himself any advantage over any other Bidder or over Owner.
4. Bidder agrees to complete the Work for the prices(s) indicated in the Unit Price Bid Schedule which follows and is further described in Section 012001 - Price and Payment.

**UNIT PRICE BID SCHEDULE**

**BASE BID**

<b>Item No.</b>	<b>Description</b>	<b>Units</b>	<b>Estimated Quantity</b>	<b>Bid Unit Price</b>	<b>Bid Price</b>
1	Mobilization/Demobilization (maximum 3 percent of total base bid)	LS	1		
2	Demolition and Removal of Pump Station #1	LS	1		
3	Demolition and Removal of Pump Station #2	LS	1		
4	Demolition, Removal and Cut, Cap, Abandonment of existing forcemain	LS	1		
5	Demolition, Removal, Cut, Cap, Abandonment of existing 30-inch DIP Sanitary Sewer	LF	520		
6	30-inch DIP CL 250 Sanitary Sewer				
	a. Depth 5 feet – 15 feet	LF	350		
	b. Depth 15 feet – 20 feet	LF	200		
	c. Depth > 20 feet	LF	25		
7	Precast Concrete Manhole (30-inch Sanitary Sewer)				
	a. Depth < 15 feet	EA	2		
	b. Depth 15 feet – 25 feet	EA	2		
	c. Depth 15 feet – 25 feet (6 foot Manhole)	EA	1		
8	Construct Pump Station #1	LS	1		
9	Construct Pump Station #2	LS	1		
10	Reems Creek Diversion, Restoration of Invert, Side Slopes	EA	2		
11	24-inch DR11 HDPE Force Main	LF	16,300		
12	Jack and Bore 36-inch Casing with 24-inch DR11 HDPE Carrier Pipe	LF	60		
13	6-inch DR13.5 HDPE Force Main	LF	1,850		
14	2-inch Sewage Combination Air Release Valves with Manholes and Filters	EA	14		
15	3-inch Vacuum Breakers with 2-inch Air Release Valves with Manholes and Filters	EA	8		
16	Lee Creek Pump Station Interconnection	LS	1		
17	Pumped Bypassing (30-inch Sanitary Sewer)	LS	1		
18	Pumped Bypassing at Pump Station #2	LS	1		
19	Above Grade 12 inch HDPE bypass piping for 12-inch DIP forcemain	LS	1		
20	Traffic Control	LS	1		

Item No.	Description	Units	Estimated Quantity	Bid Unit Price	Bid Price
21	Trench Pavement Repairs (Asphalt)				
	a. NCDOT Roads	SY	4,700		
	b. Training Center Site	SY	100		
	c. Hydro Building Access Road, Driveways.	SY	1,750		
22	Trench Pavement Repairs (Concrete)	SY	250		
23	Trench Pavement Repairs (Gravel)	SY	3,000		
24	Trench Miscellaneous Repairs (Curb, Sidewalk, Dirt Roads)	LS	1		
25	New Concrete Pavement (PS #1)	CY	160		
26	New Asphalt Pavement (PS #2)	CY	30		
27	Grind and Overlay (Hidden Falls Dr.)	SY	3,500		
28	Grind and Overlay (Old Marshall Hwy.)	SY	4,270		
29	Undercut of Unstable Pipe Foundation and Replacement with #57 Stone	CY	500		
30	Removal of Unsuitable Material and Replacement with Select Backfill	CY	500		
31	Removal of old WWTP on PS1 site	CY	100		
32	Rock Excavation by Mechanical Methods	CY	2500		
33	Level A and B Subsurface Utility Engineering	LS	1		
34	Erosion Control Matting	SY	20,000		
35	Silt Fence	LF	25,500		
36	Silt Fence Outlets	EA	128		
37	Electrical Work	LS	1		
38	Permanent Stormwater BMPs	LS	1		
39	Systems Integration (CITI)	AL	1		\$461,740

**TOTAL BASE BID PRICE (Sum of Items 1 – 39) \$** \_\_\_\_\_

## **ALTERNATE BIDS**

### **Alternate Bid No. 1 – Polymer Concrete Manholes In lieu of Precast Concrete Manholes**

Bidder shall complete the Alternate Bid No. 1 Schedule below and provide a price reduction (-) or addition (+) for the net difference in cost to provide and install precast polymer concrete manholes in lieu of standard precast concrete manholes in the Base Bid for the depth classes and sizes described in the Alternate Bid Schedule. All polymer concrete manholes shall include

composite frames and cover. The Bidder must complete the Alternate Bid Schedule in full for bid proposal to be acceptable and indicate if the prices are deducts (-) or adders (+).

Item No.	Description	Units	Estimated Quantity	Bid Unit Price	Bid Price
7	Polymer Concrete Manhole (30-inch Sanitary Sewer)				
	a. Depth < 15 feet	EA	2		
	b. Depth 15 feet – 25 feet	EA	6		
	c. Depth 15 feet – 25 feet (6' Manhole)	EA	1		

**ALTERNATE 1 BID PRICE (Sum of above Items 7A, 7B and 7C)**

\$ \_\_\_\_\_ (ADD OR DEDUCT) \_\_\_\_\_

**Alternate Bid No. 2 – 30-inch FRP Gravity Sewer in lieu of 30-inch DIP Gravity Sewer**

Bidder shall complete the Alternate Bid No. 2 Schedule below and provide a price reduction or addition for the net difference in cost to provide and install 30-inch FRP gravity sewer in lieu of 30-inch DIP gravity sewer. The Bidder must complete the Alternate Bid Schedule in full for bid proposal to be acceptable and indicate if the prices are deducts (-) or adders (+).

Item No.	Description	Unit	Estimated Quantity	Bid Unit Price	Bid Price
6	30-inch FRP SN72 Sanitary Sewer				
	a. Depth 5 feet – 15 feet	LF	350		
	b. Depth 15 feet – 20 feet	LF	200		
	c. Depth > 20 feet	LF	25		

**ALTERNATE 2 BID PRICE (Sum of items 6a, 6b, 6c above)**

\$ \_\_\_\_\_ (ADD OR DEDUCT) \_\_\_\_\_

**TOTAL WRITTEN BID PRICE**

The price shown below includes the base bid and all alternates:

**TOTAL BID PRICE (Base with Alternates) \$** \_\_\_\_\_

5. The Bidder agrees that the Work shall be substantially completed within the prescribed calendar days as stipulated in Article 4 of the Standard General Conditions of the Construction Contract. Time commences to run as provided in Article 4 of the Standard General Conditions of the Construction Contract and will run continuously until the project is completed and ready for final payment in accordance with Article 15 of the Standard General Conditions of the Construction Contract and Section 005214.16 - Agreement.
6. The following documents are attached to and made a condition of this Bid. For items requiring the Contractor to identify subcontractors or suppliers, the Contractor shall make a good faith effort to complete all fields requested. Use of "to be determined" is not acceptable. Failure to complete all fields in the Bid Form are grounds for the bid to be deemed Non-Responsive and rejected at the Owner's discretion.
  - A. Bid Bond.
  - B. Corporate Authority to Execute Bid and Contract (any corporate employee other than President or Vice-President).
  - C. List of Proposed Subcontractors (Item 7).
  - D. Equipment Suppliers (Item 8)
  - E. Qualifications - List of 5 Project References (Item 9).
  - F. Evidence of authority to do business in the state of North Carolina.
  - G. NC General Contractor's License No.: \_\_\_\_\_ (License Number and evidence of current license shall be required at the time of bid opening, no exceptions).
  - H. Applicable MSD Minority Business Enterprise Form included at the end of section 007300.16, Supplementary Conditions.
7. List the names and addresses of the subcontractors to be used for the portions of the work listed below (list "self" if work will be performed by prime contractor).

<b><u>WORK</u></b>	<b><u>CONTRACTOR</u></b>
DEMOLITION	
CONCRETE WORK	
PAVING	
JACK AND BORE	

ELECTRICAL WORK	
SEWER BYPASSING	
HVAC WORK	

8. The Bidder proposes to furnish and install the indicated products from the below-listed Manufacturers/Suppliers.

(List must be completely filled out for bid proposal to be acceptable)

<b><u>EQUIPMENT/PRODUCT</u></b>	<b><u>SUPPLIER</u></b>
HDPE Pipe	
Ductile Iron Pipe	
FRP Pipe	
Manholes (Standard Precast)	
Manholes (Polymer Concrete)	
Pumps (PS1)	
Pumps (PS2)	
Grinders	
Sewage Vacuum Breaker and Air Release Valves	
Sewage Combination Air & Vacuum Valves	
Bridge Crane	
Generator (PS1)	
Electrical Building	

9. Contractor References:

Attach to the bid a separate document(s) listing five (5) reference projects of similar size and complexity where the Contractor has performed work to modify or upgrade existing process mechanical equipment at an active municipal wastewater treatment facility. The Engineer will contact references during the bid review period. Provide the following minimum information:

- Name of Project and brief description of the work.
- Dollar value of the work completed by the Contractor.
- Name of Owner with Contact, Address and Telephone Number.
- Name of Engineer with Contact, Address and Telephone Number.
- Name of Contractor's superintendent who oversaw work in the field on a daily basis.
- Name of Contractor's project manager.
- Describe schedule compliance – was the project completed on schedule, were liquidated damages withheld?
- Describe any disputes on the project that required formal dispute resolution (mediation, arbitration, or other).
- Description and dollar amount of each Change Order.

10. Communications concerning this Bid shall be addressed to:

Contact Name: Shaun Armistead, PE, [ShaunA@msdbc.org](mailto:ShaunA@msdbc.org), 828-225-8269

Address: Mull Building\_\_\_\_\_

2028 Riverside Drive\_\_\_\_\_

Woodfin, NC\_\_\_\_\_

11. The terms used in this Bid which are defined in the Standard General Conditions of the Construction Contract included as part of the Contract Documents have the meanings assigned to them in the Standard General Conditions of the Construction Contract.

(REMAINDER OF THIS PAGE INTENTIONALLY LEFT BLANK)

Submitted on \_\_\_\_\_, 20\_\_.

Bidder is:

An Individual

By: \_\_\_\_\_ (SEAL)  
(Individual's Name and Signature)

Doing business as: \_\_\_\_\_

Business address: \_\_\_\_\_  
\_\_\_\_\_  
\_\_\_\_\_

Phone No.: \_\_\_\_\_

A Partnership

By: \_\_\_\_\_ (SEAL)  
(Firm Name)

\_\_\_\_\_  
(General Partner's Name and Signature)

Business address: \_\_\_\_\_  
\_\_\_\_\_  
\_\_\_\_\_

Phone No.: \_\_\_\_\_



A Corporation

By: \_\_\_\_\_ (SEAL)  
(Corporation Name)

\_\_\_\_\_  
(State of incorporation)

By: \_\_\_\_\_  
(Name and signature of person authorized to sign)

\_\_\_\_\_  
(Title)

(Corporate Seal)

Attest: \_\_\_\_\_  
(Secretary)

Business address: \_\_\_\_\_  
\_\_\_\_\_  
\_\_\_\_\_

Phone No.: \_\_\_\_\_

A Joint Venture

By: \_\_\_\_\_  
(Name and Signature)

Business address: \_\_\_\_\_  
\_\_\_\_\_  
\_\_\_\_\_

Phone No.: \_\_\_\_\_

By: \_\_\_\_\_  
(Name and Signature)

Business address: \_\_\_\_\_  
\_\_\_\_\_  
\_\_\_\_\_

Phone No.: \_\_\_\_\_

(Each joint venturer must sign. The manner of signing for each individual, partnership, and corporation that is a party to the joint venture should be in the manner indicated above).

END OF SECTION

THIS PAGE INTENTIONALLY LEFT BLANK

## SECTION 012001 - PRICE AND PAYMENT

### PART 1 - GENERAL

#### 1.1 RELATED DOCUMENTS

- A. Drawings and general provisions of the Contract, including General and Supplementary Conditions and Division 01 Specification Sections, apply to this Section.

#### 1.2 SUMMARY

- A. Section Includes:

- 1. Lump sum prices.

#### 1.3 LUMP SUM PRICES

- A. BID ITEM #1: Mobilization/Demobilization (Maximum 3 percent of Total Base Bid).

Payment of the lump sum price bid for Item No. 1 shall include, but not be limited to, full compensation for all labor, materials, tools, equipment and incidentals, mobilization/demobilization, bonds, insurance, permit fees, shop drawing submittals, as-built documentation, photos/videos, schedule of values, project schedule, temporary sanitation, meetings, office supplies, temporary utility hookups necessary for constructing the project complete, as shown and as specified in Divisions 01 through 46. The price shall not exceed 3 percent of the total bid. Half the mobilization may be requested on the first pay request and the remainder on the second.

- B. BID ITEM #2: Demolition and Removal of Pump Station #1.

Payment of the lump sum price bid for Item No. 2 shall include, but not be limited to, full compensation for all labor, materials, tools, equipment and incidentals, necessary for removal, abandonment and salvage of existing pump station #1 complete, as shown and as specified in Divisions 01 through 46.

- C. BID ITEM #3: Demolition and Removal of Pump Station #2.

Payment of the lump sum price bid for Item No. 3 shall include, but not be limited to, full compensation for all labor, materials, tools, equipment and incidentals, necessary for removal, abandonment and salvage of existing pump station #2 complete, as shown and as specified in Divisions 01 through 46.

- D. BID ITEM #4: Demolition, Removal and Cut, Cap, Abandonment of Existing Forcemain.

Payment of the lump sum price bid for Item No. 4 shall include, but not be limited to, full compensation for all labor, materials, tools, equipment and incidentals, necessary for removal,

and/or abandonment of the existing 12 inch DIP forcemain, portions of the existing 20 inch HDPE forcemain complete, as shown and as specified in Divisions 01 through 46.

E. BID ITEM #8: Construct Pump Station #1.

Payment of the lump sum price bid for Item No. 8 shall include, but not be limited to, full compensation for all labor, materials, tools, equipment and incidentals, necessary for construction of pump station #1 complete, as shown and as specified in Divisions 01 through 46.

F. BID ITEM #9: Construct Pump Station #2.

Payment of the lump sum price bid for Item No. 9 shall include, but not be limited to, full compensation for all labor, materials, tools, equipment and incidentals, necessary for construction of pump station #2 complete, as shown and as specified in Divisions 01 through 46.

G. BID ITEM #16: Lee Creek Pump Station Interconnection.

Payment of the lump sum price bid for Item No. 16 shall include, but not be limited to, full compensation for all labor, materials, tools, equipment and incidentals, necessary for the temporary diversion and reconnection of the Lee Creek Pump Station forcemain interconnection including all excavation, backfill, compaction, spoils offhaul, fittings, valves, and appurtenances as shown and specified in Divisions 01 through 46.

H. BID ITEM #17: Pumped Bypassing (30 inch Sanitary Sewer).

Payment of the lump sum price bid for Item No. 17 shall include, but not be limited to, full compensation for all labor, materials, tools, equipment and incidentals, necessary for the temporary pumped bypassing of the 30 inch sanitary sewer crossing Reems Creek at pump station #1. Work will include mobilization, installation, operation, maintenance and removal of the full pumping system including backup generators, odor and noise control, complete as shown and specified in Divisions 01 through 46.

I. BID ITEM #18: Pumped Bypassing at Pump Station #2.

Payment of the lump sum price bid for Item No. 18 shall include, but not be limited to, full compensation for all labor, materials, tools, equipment and incidentals, necessary for the temporary pumped bypassing of pump station #2. Work will include mobilization, installation, operation, maintenance and removal of the full pumping system including backup generators, odor and noise control, complete as shown and specified in Divisions 01 through 46.

J. BID ITEM #19: Above Grade 12 inch HDPE bypass piping for 12 inch DIP Forcemain.

Payment of the lump sum price bid for Item No. 19 shall include, but not be limited to, full compensation for all labor, materials, tools, equipment and incidentals, necessary for the temporary 12 inch HDPE piping used to bypass the existing 12 inch forcemain. Work will include mobilization, installation of temporary piping, joint fusion, temporary valves, fittings, operation, maintenance and removal of the full system and relocation to locations as necessary, complete as shown and specified in Divisions 01 through 46.

K. BID ITEM #20: Traffic Control.

Payment of the lump sum price bid for Item No. 20 shall include, but not be limited to, full compensation for all labor, materials, tools, equipment and incidentals, necessary for traffic control along both private and public roads, complete as shown and specified in Divisions 01 through 46.

L. BID ITEM #24: Trench Miscellaneous Repairs (Curb, Sidewalk, Dirt Roads).

Payment of the lump sum price bid for Item No. 24 shall include, but not be limited to, full compensation for all labor, materials, tools, equipment and incidentals, necessary for cutting, removal and disposal of all other trench surfaces including curb & gutter, sidewalks, dirt roads, complete as shown and specified in Divisions 01 through 46.

M. BID ITEM #33: Level A and B Subsurface Utility Engineering.

Payment of the lump sum price bid for Item No. 33 shall include, but not be limited to, full compensation for all labor, materials, tools, equipment and incidentals, necessary for Levels and B subsurface utility engineering required, complete as shown and specified in Divisions 01 through 46.

N. BID ITEM #37: Electrical Work.

Payment of the lump sum price bid for Item No. 36 shall include, but not be limited to, full compensation for all labor, materials, tools, equipment and incidentals, necessary for electrical work at pump stations #1 and #2, complete as shown and specified in Divisions 01 through 46.

O. BID ITEM #38: Permanent Stormwater BMPs.

Payment of the lump sum price bid for Item No. 38 shall include, but not be limited to, full reimbursement for all labor, materials, tools, equipment and incidentals, necessary for construction of the stormwater pond with rip rap outlet along with grass-lined swales on the pump station #1 site, complete as shown and specified in Divisions 01 through 46.

P. BID ITEM #39 (Allowance): Systems Integration (CITI).

Payment of the lump sum price bid for Item No. 39 shall include, but not be limited to, full reimbursement for all labor, materials, tools, equipment and incidentals, necessary for systems integration work at pump stations #1 and #2, complete as shown and specified in Divisions 01 through 46. CITI's proposal excludes sales tax. CITI is the systems integrator that will be performing the work. Refer to Section 012100 Allowances for more information.

1.4 TOTAL BID

- A. Part I covers the work of the General Contractor and Part II covers the work of the Subcontractors.

1.5 PAYMENT

- A. Payment of the total price bid in the Form for General Bid, shall fully compensate Contractor for furnishing all labor, materials, equipment and incidentals required to complete the work as outlined above and under Section 011000 "Summary". Payment shall also include compensation for all other work required to complete the Project as described in the Contract Documents and not specifically mentioned.

1.6 EXTRA WORK

- A. Extra work, if any, will be performed in accordance with Article 11 of the General Conditions and will be paid for in accordance with the provisions of Article 13 of the General Conditions.

PART 2 - PRODUCTS (NOT USED)

PART 3 - EXECUTION (NOT USED)

END OF SECTION 012001

## SECTION 012200 - UNIT PRICES

### PART 1 - GENERAL

#### 1.1 RELATED DOCUMENTS

- A. Drawings and general provisions of the Contract, including General and Supplementary Conditions and other Division 01 Specification Sections, apply to this Section.

#### 1.2 SUMMARY

- A. Section includes administrative and procedural requirements for unit prices.
- B. Related Requirements:
  - 1. Section 012100 "Allowances" for procedures for using unit prices to adjust quantity allowances.
  - 2. Section 012600 "Contract Modification Procedures" for procedures for submitting and handling Change Orders.
  - 3. Section 014000 "Quality Requirements" for field testing by an independent testing agency.

#### 1.3 DEFINITIONS

- A. Unit price is a price per unit of measurement for materials, equipment, or services, or a portion of the Work, added to or deducted from the Contract Sum by appropriate modification, if the scope of Work or estimated quantities of Work required by the Contract Documents are increased or decreased.

#### 1.4 PROCEDURES

- A. Unit prices include all necessary material, plus cost for delivery, installation, insurance, applicable taxes, overhead, and profit.
- B. Measurement and Payment: See individual Specification Sections for work that requires establishment of unit prices. Methods of measurement and payment for unit prices are specified in those Sections.
- C. Owner reserves the right to reject Contractor's measurement of work-in-place that involves use of established unit prices and to have this work measured, at Owner's expense, by an independent surveyor acceptable to Contractor.
- D. List of Unit Prices: A schedule of unit prices is included in Part 3. Specification Sections referenced in the Part 3 "Schedule of Unit Prices" Article contain requirements for materials described under each unit price.

## PART 2 - PRODUCTS (NOT USED)

## PART 3 - EXECUTION

### 3.1 SCHEDULE OF UNIT PRICES

- A. BID ITEM #5: Demolition, Removal, Cut, Cap, Abandonment of existing 30-inch DIP Sanitary Sewer.
  - 1. Description: Abandonment and/or removal of 30-inch DIP sewer, removal of manholes, removal of aerial crossing with concrete piers as required, in accordance with the contract documents.
  - 2. Unit of Measurement: Linear Feet of pipe removed or abandoned.
- B. BID ITEM #6: 30-inch DIP CL 250 Sanitary Sewer.
  - 1. Description: Installation of 30-inch Sanitary Sewer, 4-inch lateral reconnection, including excavation, compaction, backfill, trench shoring, dewatering, surface repairs, testing and inspection as required, in accordance with the contract documents.
  - 2. Unit of Measurement: Linear Feet of Sewer Installed at various depths.
- C. BID ITEM #7: Precast Concrete Manhole (30-inch Sanitary Sewer).
  - 1. Description: Installation of 5-foot precast concrete manholes and a single 6-foot precast concrete manhole for the 30 inch Sanitary Sewer, including excavation, compaction, backfill, trench shoring, dewatering, and testing and inspection as required, in accordance with the contract documents.
  - 2. Unit of Measurement: Each manhole is a unit based on the various depths shown.
- D. BID ITEM #10: Reems Creek Diversion, Restoration of Invert, Side Slopes.
  - 1. Description: Installation and removal of a stream diversion, restoration of the stream bottom and side slopes after pipeline installation for the 30-inch gravity sewer crossing and 24 inch force main crossing, in accordance with the contract documents.
  - 2. Unit of Measurement: Each location.
- E. BID ITEM #11: 24-inch DR11 HDPE Force Main.
  - 1. Description: Installation of 24-inch DR11 HDPE Force Main with fittings and appurtenances, Patti Lane service reconnection including, but not limited to, excavation, compaction, backfill, pipe bedding, trench shoring, dewatering, and testing and inspection as required, in accordance with the contract documents.
  - 2. Unit of Measurement: Linear Feet of 24-inch DR11 HDPE Force main installed.
- F. BID ITEM #12: Jack and Bore 36-inch Casing with 24-inch DR11 HDPE Carrier Pipe.
  - 1. Description: Installation of a 36-inch Welded Steel Casing with 24-inch DR11 HDPE Force Main Carrier pipe via jacking and boring under Goldview Road with fittings, appurtenances, casing spacers, end seals including, but not limited to, excavation,



- compaction, backfill, trench shoring, dewatering, for trenchless pits, and testing and inspection as required, in accordance with the contract documents.
  - 2. Unit of Measurement: Linear Feet of 36-inch Welded Steel Casing installed.
- G. BID ITEM #13: 6-inch DR13.5 HDPE Force Main.
- 1.
  - 2. Unit of Measurement: Linear Feet of 6-inch DR13.5 HDPE Force main installed.
- H. BID ITEM #14: 2-inch Sewage Combination Air Release Valves with Manholes and Filters.
- 1.
  - 2. Unit of Measurement: Each valve.
- I. BID ITEM #15: 3-inch Vacuum Breakers with 2-inch Air Release Valves with Manholes and Filters.
- 1. Description: Installation of 3-inch Vacuum Breakers with 2-inch Air Release Valves with manholes, odor filters, service saddle and connection to the 24-inch HDPE force main, piping fittings and appurtenances in accordance with the contract documents.
  - 2. Unit of Measurement: Each valve.
- J. BID ITEM #21: Trench Pavement Repairs (Asphalt)
- 1. Description:
    - a. NCDOT Roads: Installation of asphalt trench pavement repair including all labor, materials, tools, equipment and incidentals, necessary for cutting, removal and disposal of existing asphalt, tack coat, aggregate base course, asphalt repairs, seal coat, associated striping and incidentals in accordance with the contract documents along NCDOT roads.
    - b. Training Center Site: Installation of asphalt trench pavement repair including all labor, materials, tools, equipment and incidentals, necessary for cutting, removal and disposal of existing asphalt, tack coat, aggregate base course, asphalt repairs, seal coat, associated striping and incidentals in accordance with the contract documents within the Training Center.
    - c. Hydro Building Access Road, Driveways: Installation of asphalt trench pavement repair including all labor, materials, tools, equipment and incidentals, necessary for cutting, removal and disposal of existing asphalt, tack coat, aggregate base course, asphalt repairs, seal coat, associated striping and incidentals in accordance with the contract documents along the Hydro building access road and any asphalt driveways impacted along the full alignment.
  - 2. Unit of Measurement: Square yards of asphalt installed.
- K. BID ITEM #22: Trench Pavement Repairs (Concrete)
- 1. Description: Installation of concrete trench pavement repair including all labor, materials, tools, equipment, and incidentals, necessary for cutting, removal and disposal of existing concrete, aggregate base course, concrete repairs, and incidentals in accordance with the contract documents.
  - 2. Unit of Measurement: Square yards of concrete installed.

- L. BID ITEM #23: Trench Pavement Repairs (Gravel)
  - 1. Description: Installation of gravel trench pavement repair including all labor, materials, tools, equipment, and incidentals, necessary for removal and disposal of existing gravel, installation of new gravel and incidentals in accordance with the contract documents.
  - 2. Unit of Measurement: Square yards of gravel installed.
- M. BID ITEM #25: New Concrete Pavement (PS1)
  - 1. Description: Installation of new concrete pavement at pump station #1 including all aggregate base courses, formwork, steel reinforcement, concrete sealants, and incidentals in accordance with the contract documents.
  - 2. Unit of Measurement: Cubic yards of concrete installed.
- N. BID ITEM #26: New Asphalt Pavement (PS #2)
  - 1. Description: Installation of new asphalt pavement at pump station #2 including all aggregate base courses tack coat, asphalt, seal coat and incidentals in accordance with the contract documents.
  - 2. Unit of Measurement: Cubic yards of asphalt installed.
- O. BID ITEM #27: Grind and Overlay (Hidden Falls Drive).
  - 1. Description: Grinding and Overlaying Hidden Falls Drive including maintaining access to private drives and offhaul of excess material in accordance with the contract documents.
  - 2. Unit of Measurement: Square Yards of pavement.
- P. BID ITEM #28: Grind and Overlay (Old Marshall Hwy.).
  - 1. Description: Grinding and Overlaying Old Marshall Hwy. to the centerline of the road including maintaining access to private drives and offhaul of excess material in accordance with the contract documents. This does not include trench repairs.
  - 2. Unit of Measurement: Square Yards of pavement.
- Q. BID ITEM #29: Undercut of Unstable Pipe Foundation and Replacement with #57 Stone.
  - 1. Description: Removal of unsatisfactory material and replacement with #57 stone including excavation, compaction, backfill, spoils offhaul in accordance with the contract documents.
  - 2. Unit of Measurement: Cubic Yards of soil removed.
- R. BID ITEM #30: Removal of Unsuitable Material and Replacement with Select Backfill.
  - 1. Description: Removal of unsatisfactory material and replacement with select backfill including excavation, compaction, backfill, spoils offhaul in accordance with the contract documents.
  - 2. Unit of Measurement: Cubic Yards of soil removed.
- S. BID ITEM #31: Removal of old WWTP on PS1 Site.

1. Description: Removal of interfering portions of the abandoned WWTP and replacement with select backfill including breaking up of concrete or other materials, removal of these materials and spoils offhaul in accordance with the contract documents.
2. Unit of Measurement: Cubic Yards of abandoned WWTP removed.

T. BID ITEM #32: Rock Excavation by Mechanical Methods.

1. Description: Classified rock excavation and disposal off-site and replacement with satisfactory fill material or engineered fill as required, in accordance with Section 312000 "Earthwork" and the contract documents.
2. Unit of Measurement: Cubic Yards of rock removed.

U. BID ITEM #34: Erosion Control Matting

1. Description: Installation of erosion control matting including all labor, materials, tools, equipment, and incidentals, necessary for placement of erosion control matting and incidentals in accordance with the contract documents.
2. Unit of Measurement: Square yards of erosion control matting installed.

V. BID ITEM #35: Silt Fence

1. Description: Installation of silt fence, in accordance with the contract documents.
2. Unit of Measurement: Linear feet of silt fence installed.

W. BID ITEM #36: Silt Fence Outlets

1. Description: Installation of silt fence outlets, in accordance with the contract documents.
2. Unit of Measurement: Number of silt fence outlets installed.

3.2 ALTERNATE BID ITEMS

A. ALTERNATE BID ITEM #1: Polymer Concrete Manholes In lieu of Precast Concrete Manholes (30 inch Sanitary Sewer).

1. Description: Installation of polymer concrete manholes for the 30-inch Sanitary Sewer, including excavation, compaction, backfill, trench shoring, dewatering, and testing and inspection as required, in accordance with the contract documents.
2. Unit of Measurement: Each manhole is a unit based on the various depths shown.

B. ALTERNATE BID ITEM #2: 30-inch FRP SN72 Sanitary Sewer.

1. Description: Installation of 30-inch fiberglass reinforced pipe with an SN of 72, 4 inch lateral reconnection, including excavation, compaction, backfill, trench shoring, dewatering, surface repairs, and testing and inspection, as required, in accordance with contract documents.
2. Unit of Measurement: Linear Feet of Sewer Installed at various depths.

END OF SECTION 012200